



## MCA SPECIAL CROPS AND WHOLE FARM CALL FOR LETTERS OF INTENT

Manitoba Crop Alliance (MCA) is now accepting letters of intent (LOIs) for consideration for MCA co-applicant support and/or industry funding. MCA will only review **LOIs to be submitted, by the principal investigator, to the Manitoba Agriculture Sustainable Canadian Agricultural Partnership (SCAP) Research and Innovation Call**. Support will be considered for research on corn, sunflower, flax and whole farm priorities.

*Projects must be set to begin in 2026 according to the Research and Innovation Program guidelines.*

**LOIs will be accepted until April 17, 2025.**

**Note: For MCA to be considered as a co-applicant or industry funder on projects submitted to the Manitoba Agriculture SCAP, LOIs must be shared by the above date (i.e., one week prior to program deadline).**

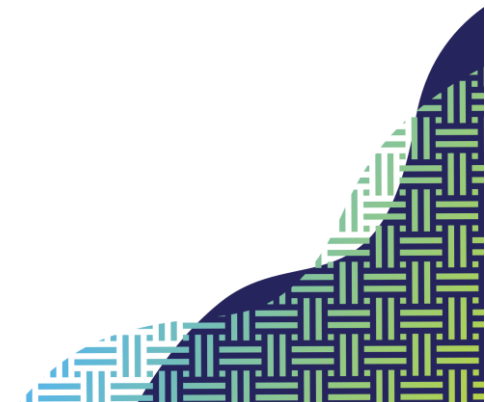
**MCA will provide confirmation and intent to review a full proposal prior to the program deadline of April 24, 2025.**

### **General LOI requirements:**

- Please submit LOIs using the LOI form provided by the Research and Innovation Program, which can be found here: [Province of Manitoba | Research and Innovation](https://www2.gov.bc.ca/gov2/industry/innovation). Ensure you follow all program guidelines.
- The principal investigator will be the applicant on the funding application; MCA will not submit LOIs on behalf of the applicant unless otherwise pre-arranged and discussed.
- The project must adhere to the following MCA [general principles](#) to be considered:
  - Innovative and forward thinking
  - Designed to answer farmers' questions and resolve their issues (see "Priorities" below for list of areas farmers have identified that need solutions)
  - Solution-oriented, producing information that can directly or indirectly support farmers in making decisions for their operations.
- **Eligible expenses** must follow the guidelines set by the Research and Innovation Program.

Your LOI may be shared with MCA's industry partners for potential co-funding and/or technical review if you provide consent.

**NOTE: MCA is NOT currently accepting applications for wheat, barley and winter wheat projects for submission into the Research and Innovation Program.**





## **Research Priorities:**

**Note:** *This is not an exhaustive list of considerations; projects that might not match the following priorities but adhere to the general principles of MCA are still encouraged to apply. Please visit the [MCA website](#), or contact MCA research program manager for special crops Katherine Stanley, to discuss priorities.*

### Corn:

- Climate-resilient corn production (crop rotation, extremes of moisture, genetic improvement, agronomy)
- Planting strategies for optimal stand establishment
- Evaluating impact of harvest conditions on yield, drying costs (economics) and phantom yield loss
- Economics and agronomy of irrigation and tile drainage in corn production

### Sunflower:

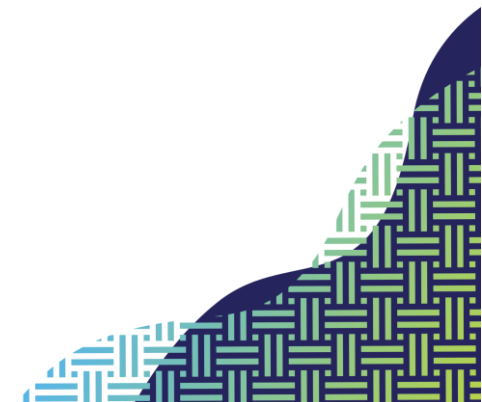
- Crop rotation strategies to improve weed management and yield
- Efficacy and economics of fungicide use
- Control and mitigation of cutworms and cutworm damage
- Assessment of no-till and minimum-till practices in confection and oil-type sunflowers
- Evaluate the cause of blanks in mature sunflowers
- Market support and development

### Flax

- Climate-resilient flax production (yield consistency, seedling vigour, frost tolerance)
- Crop rotation considerations with emphasis on weed management, residual herbicides and soil fertility
- Production strategies to minimize harvest challenges
- Harvest and post-harvest management of flax straw
- Insect pest and disease management
- Impact of climate, soil type and variety on cadmium uptake
- Exploring poor germination and vigour of harvested seed in seed production industry

### Whole Farm

- Crop rotation innovation
- Soil health
- Cover cropping and intercropping
- Pest management
- Water management
  - Extremes of moisture
  - Irrigation and drainage innovation
- Farm management and economics





**MANITOBA  
CROP  
ALLIANCE**

P.O. Box 188, 38 4th Ave. NE  
Carman, Manitoba  
Canada, ROG 0J0

**P:** 204.745.6661  
**F:** 204.745.6122  
**[mbcropalliance.ca](http://mbcropalliance.ca)**

**Contact:**

Submit applications and any questions to:  
Katherine Stanley  
Research Program Manager – Special Crops  
Manitoba Crop Alliance  
[katherine@mbcropalliance.ca](mailto:katherine@mbcropalliance.ca)  
204-898-4122

