



MANITOBA CROP ALLIANCE CALL FOR LETTERS OF INTENT

*Manitoba Crop Alliance (MCA) is now accepting letters of intent (LOIs) for funding for special crops research projects (sunflower, flax, corn and winter wheat), Whole Farm Research projects and increasing research capacity funding requests. Projects to begin in 2025. **LOIs will be accepted until Friday, March 15, 2024.***

General LOI requirements:

- The current call will have a maximum project length of three years
 - Projects that require more long-term commitment (e.g., rotational work) may be considered on a case-by-case basis
- The project must adhere to the following MCA general principles to be considered:
 - Innovative and forward thinking
 - Designed to answer farmers' questions and resolve their issues (See "Priorities" for list of areas farmers have identified that need solutions)
 - Solution-oriented, producing information that can directly or indirectly support farmers in making decisions for their operations.
 - Principal investigator for the project is a full-time, permanent employee at a Canadian public or private research organization

Special crops research project requirements:

- The focus must be beneficial for corn, flax or sunflower
- The project should focus on at least one of the priorities set out in "Priorities"

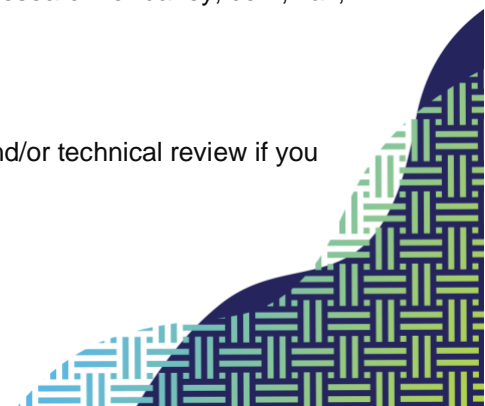
Whole Farm Research project requirements:

- The project must feature a minimum of two crop types (with at least one being wheat, barley, corn, flax or sunflower) or be focused on farming issues that are not crop specific (e.g., weeds, soil health, etc.)
- Manitoba Canola Growers Association and Manitoba Pulse and Soybean Growers will also be reviewing proposals
- See "Priorities" for a list of priorities for Whole Farm Research

Increasing research capacity funding request requirements:

- The request should be focused on cost required to increase capacity of research for barley, corn, flax, sunflower, wheat or whole farm (e.g., larger equipment, etc.)
- Requests will be limited to building capacity within Manitoba

Your LOI may be shared with MCA's industry partners for potential co-funding and/or technical review if you provide consent.





Priorities

Note: *This is not an exhaustive list of considerations; projects that might not fit into priorities but still follow the general principles of MCA are still encouraged to apply.*

Both Manitoba Canola Growers Association and Manitoba Pulse and Soybean Growers will be invited to review whole farm proposals for co-funding. Inclusion of canola, pulses and soybeans is encouraged.

Whole Farm

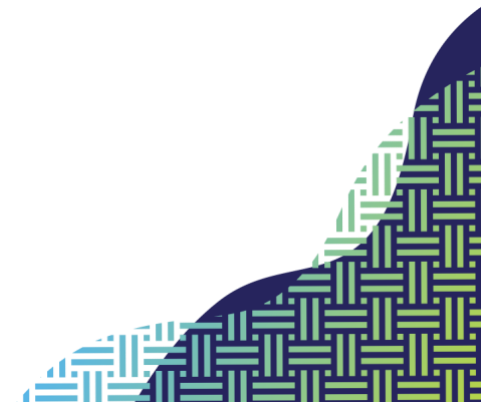
- Crop rotation innovation
 - Rotational design considering nutrient-use efficiency, pest management, improved soil health, water-use efficiency and profitability
- Soil health
 - Implication of cropping system practices on soil organic matter, soil biology and soil physics
 - Soil salinity
- Cover cropping and intercropping
 - Specifically for Manitoba growing conditions
- Pest management
 - All major weeds in Manitoba, kochia of special interest
 - Diseases for MCA crop types
 - Insects
 - Should focus on optimization of current tools and minimize resistance pressure, next generation control options or integration of digital tools
- Water management
 - Extremes of moisture
 - Irrigation and drainage innovation
- Farm management and economics
 - Economic analysis for Manitoba practices
 - Harvest management
 - Analysis of timing of various farming practices

Special Crops

Flax

- Variety development / genetic enhancement
- Agronomic innovations to increase flax productivity
- Nutrient management
- Improving yield consistency
- Residue management and flax straw utilization
- Pest management (i.e., weeds, insects, disease)
- Harvest management

Sunflower





- Variety development / genetic enhancement
- Applied agronomy research
- Nutrient management
- Pest Management (i.e., weeds, insects/mammals, disease)
- Harvest and residue management
- Value-added opportunities

Corn

- Genetic enhancement
- Applied agronomy research
- Damage pressure on yield (e.g., hail, pests, etc.)
- Nutrient management
- Pest management
 - Innovations to reduce weed pressure and prevalence
 - Insect management
 - Disease management
- Harvest and residue management

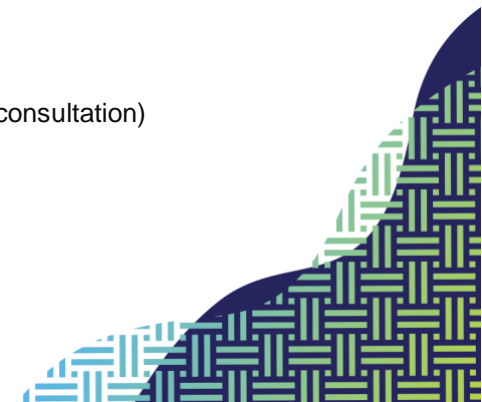
Winter Wheat

- Agronomic
 - Fusarium head blight
 - Nitrogen and protein
 - Rotational considerations
 - Stand establishment, population and row-spacing research
 - Harvest management
- Profitability vs. other crops
 - Yield and yield stability

Expenses

Only include the amount of funding you are requesting from MCA and industry partners within your LOI. If you have already secured confirmed funding from these or other sources, please indicate this on the “Cash contribution from other sources” or “In-kind contributions” sections of the LOI template.

- **Whole farm and special crops projects**
 - Eligible expenses:
 - Salaries (students, postdoctoral fellows, technical assistants)
 - Consultant fees
 - Equipment rental
 - Material/supplies
 - Project travel (conferences, fieldwork, collaboration/consultation)
 - Publication costs
 - Overhead costs to a maximum of 15 per cent





- For AAFC applicants only – Science Service Charges up to 10 per cent
- Ineligible expenses
 - Equipment purchases costing more than \$3,500, unless otherwise specified
 - Any other expenses not directly related to the MCA project
- **Research capacity building**
 - Eligible expenses:
 - Purchases related to increasing the capacity of research on wheat, barley, sunflower, flax, corn and/or whole farm within Manitoba
 - Ineligible expenses
 - Expenses related to establishing a commercial operation
 - Purchases that will not be utilized for research
 - Purchases that are not required for the expansion of capacity for crops specific to MCA
 - Purchases for programs outside of Manitoba

