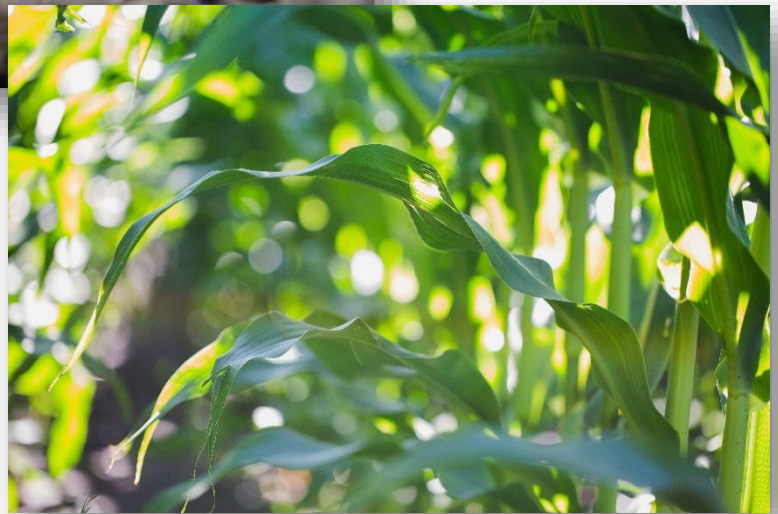




MANITOBA
CROP
ALLIANCE

2021

Manitoba Corn Hybrid Performance Trials



Conducted by the Manitoba Corn Committee





WELCOME TO THE 2021 MANITOBA CORN COMMITTEE CORN BROCHURE

Welcome to the 2021 edition of the Manitoba Corn Hybrid Performance Trials results, compliments of the Manitoba Corn Committee (MCC) and the Manitoba Crop Alliance (MCA). The MCC trial brochure remains a source of unbiased and local corn hybrid performance information from small plot trials being conducted at various locations within Manitoba.

The 2021 growing season was once again a dry one. Some would say it was drier than 2020. Seedling emergence and growth was highly variable within a commercial field as well as within the corn trials. This is why replication is used in the small plot trials. Variability resulted from differences in previous crop residue as well as soil moisture availability. At the end of the season, 2 out of the 10 corn trials were lost due to a high CV and variability within the hybrids in the trials.

There were 7 grain corn trial locations planted with 5 trials producing harvest data. The 7 locations were located near: Carman, Rosebank, Horndean, MacGregor, St. Pierre, Carberry and Melita. Both the Carberry and Melita trials were lost due to high trial CVs.

There was great participation in the grain corn trials. The long season test had 69 hybrids being tested; the mid-season trials had 60 hybrids; and the short season trials had 29 hybrids.

3 Silage trial locations were planted in 2021. These were located near Elm Creek, St. Pierre and Arborg. There were 64 hybrids being tested at both the Elm Creek and St. Pierre locations and 30 hybrids at Arborg. All 3 trials were taken to yield. Quality samples from each trial were collected and submitted to Central Testing Labs (Winnipeg) for moisture determination and feed quality analysis. The Milk2006 worksheet was used to evaluate corn silage hybrid feed quality performance.

The MCC would like to say “Thank-You” to all the landowners that provided the land for each of the trials and test sites. They would also like to thank the site/trial contractors for all their hard work and effort this year especially with the added measures for COVID19 required. The contractors were: AgQuest Inc., Nutrien Ag Solutions, PESAI, WADO, CMCDC, and Central Testing Labs (CTL).

The Committee would also like to thank Manitoba Agriculture and Resource Development (MARD) for providing the Corn Heat Unit and Precipitation maps found within the brochure. More detailed weather information for the MCC trial sites or your own local area can be found on the Manitoba Ag Weather Program website at <http://tgs.gov.mb.ca/climate/>.

Please read the “Important Notes” section. It provides some information for interpreting the tables that will assist you when reviewing the trial results.

If you require any further information on the Corn Hybrid Performance Trials or interpretation of the results, please do not hesitate to contact Manitoba Crop Alliance (MCA) at 204.745.6661. An electronic copy of the 2021 Performance Trial results, as well as the previous years results can be found on the MCA website (<https://mbcropalliance.ca>).

Daryl Rex, Chair – Manitoba Corn Committee



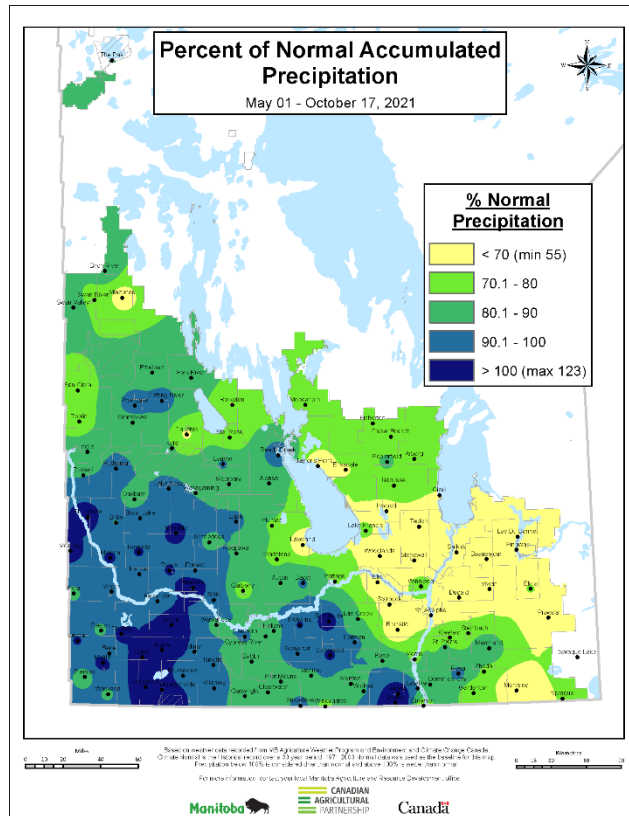
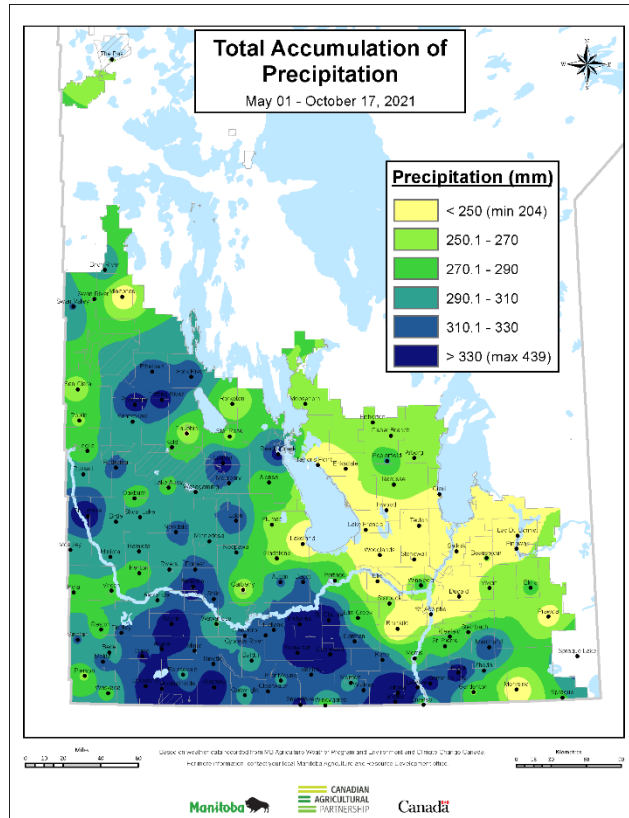
IMPORTANT NOTES FOR THE GRAIN & SILAGE CORN TABLES

- **USING THE MANITOBA CORN COMMITTEE RESULTS:** The MCC realizes companies/retailers often use the results from the MCC corn hybrid performance trials for their own marketing and promotional programs. The tables within the brochure are to be used in their entirety to ensure fairness when comparing hybrids. When using the MCC's data, please reference the "2021 Manitoba Corn Hybrid Performance Trials" brochure and indicate the complete brochure can be obtained from either phoning the Manitoba Crop Alliance office (204-745-6661) or on their website (www.mbcropalliance.ca).
- **CHU RATING:** Each company assigns a Corn Heat Unit (CHU) rating to their hybrids. The CHU rating is a relative maturity indicator and is only one criteria to be considered when selecting a hybrid that will mature in your area. Seed moisture content at harvest, bulk density and days to 50% silk are other measurements to look at when evaluating the relative maturity of corn hybrids.
- **TECHNOLOGY/GENETIC TRAITS:** The Seeds Canada website provides a database for corn hybrids available in Canada at <https://seeds-canada.ca/corn-hybrid-database/> information provided includes technology, brand name and refuge requirements.
- **CV = COEFFICIENT OF VARIATION:** It is a measure of the random variation in a trial. A smaller CV value is more desirable.
- **LSD = LEAST SIGNIFICANT DIFFERENCE:** Hybrids must differ by the LSD to be considered significant different from one another.
- **SIGN. DIFF. = SIGNIFICANT DIFFERENCE:** Indicates if a real difference exists between hybrids at an individual location.

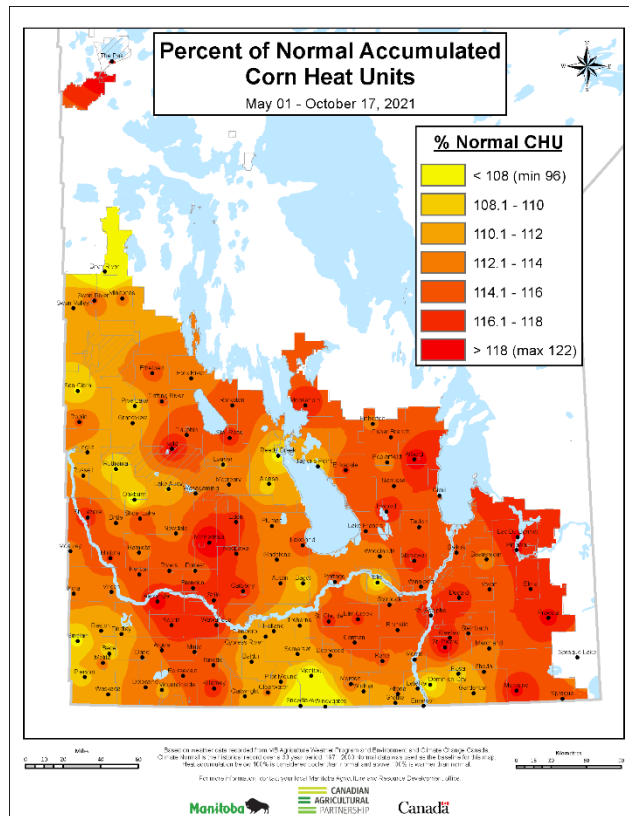
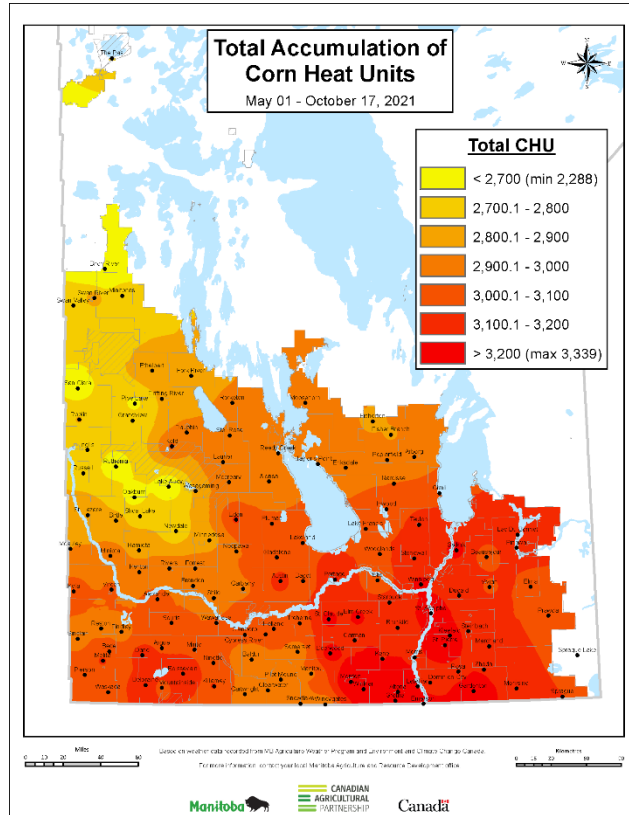




PRECIPITATION DATA FOR 2021



CORN HEAT UNIT DATA FOR 2021



GRAIN CORN 2021 - CARMAN

Comments:

The grain corn hybrid trials were tested and the data published by the Manitoba Corn Committee (MCC).

The data presented is for one year only. Use with caution.

A target plant population of 32,000 plants per acre was used.

Yields are corrected to 15.5% moisture content. Moisture content is measured at time of harvest.

The MCC publishes the annual results with all the yearly data in their brochure, which is available by calling the Manitoba Crop Alliance (MCA) office.

The brochure is also available on the MCA website: www.mbcropalliance.ca

CHU ¹ Rating	Hybrid	Technology/Genetic		CARMAN			
		Trait ²	Company	Yield (bu/ac)	Moisture (%)	Days to Silking	Bushel Wt (lbs/bu)
2000	P7005AM	YGCB/HX1/LL/RR2	Pioneer Brand Seed	106	17.8	64	57.5
2025	TH4072 RR	RR2	Thunder Seed	140	18.5	68	56.3
2050	P7202AM	YGCB/HX1/LL/RR2	Pioneer Brand Seed	116	17.7	65	55.8
2050	P7211AM	YGCB/HX1/LL/RR2	Pioneer Brand Seed	123	17.1	64	56.7
2050	DKC20-23RIB	VT2P	DEKALB	123	17.6	66	57.5
2075	DKC21-36RIB	VT2P	DEKALB	140	18.3	69	57.0
2100	P7455R	RR2	Pioneer Brand Seed	132	18.5	68	56.0
2100	TH6875 VT2P	VT2P	Thunder Seed	143	19.1	70	56.9
2100	DKC24-06RIB	VT2P	DEKALB	149	20.9	71	55.5
2100	CP1440VT2P/RIB	VT2P/RIB	CROPLAN	163	19.8	71	55.0
2125	P7417AM	YGCB/HX1/LL/RR2	Pioneer Brand Seed	142	20.0	70	53.8
2150	P7527AM	YGCB/HX1/LL/RR2	Pioneer Brand Seed	141	18.9	71	54.5
2150	P7574AM	YGCB/HX1/LL/RR3	Pioneer Brand Seed	158	19.6	69	53.7
2150	MZ 1340DBR	VT2P	Maize Seeds	144	18.6	67	57.0
2175	TH6977 VT2P	VT2P	Thunder Seed	157	19.2	68	56.5
2175	NS 276	VT2PRO	Northstar Genetics	162	20.9	73	54.8
2175	PV 61276RIB	VT2P	Proven Seed	135	18.7	68	58.0
2200	NS EXP77	VT2PRO	Northstar Genetics	133	19.7	70	57.8
2200	A4329G2 RIB	VT2P	PRIDE Seeds	141	18.7	68	57.4
2200	PV 61377RIB	VT2P	Proven Seed	163	20.6	69	55.0
2225	P7844AM	YGCB/HX1/LL/RR3	Pioneer Brand Seed	160	21.2	70	53.4
2225	TH6278 VT2P	VT2P	Thunder Seed	177	20.5	72	54.5
2250	P7861AM	YGCB/HX1/LL/RR2	Pioneer Brand Seed	155	19.7	70	55.2
2250	TH6079 VT2P	VT2P	Thunder Seed	158	20.7	72	55.4
2250	X21080A/VT2P	VT2P/RIB	CROPLAN	145	18.9	69	56.4
2250	PV 61180RIB	VT2P	Proven Seed	176	20.8	73	54.5
2250	PV 61479RIB	VT2P	Proven Seed	160	19.5	71	55.8
2250	MZ 1544DBR	VT2P	Maize Seeds	169	19.5	71	54.9
2250	HZ 1685	Agrisure Viptera 3110	Horizon Seeds	146	19.4	73	55.9
2275	P7958AM	YGCB/HX1/LL/RR2	Pioneer Brand Seed	187	20.0	71	53.9
2275	PS 2333RR	RR2	PICKSEED	187	22.1	69	55.7
2275	DKC29-89RIB	VT2P	DEKALB	177	20.5	71	53.4
2275	A4514RR	RR2	PRIDE Seeds	151	20.5	69	54.6
2300	PS 2420RR	RR2	PICKSEED	169	21.8	70	53.6
2300	CP2123VT2P/RIB	VT2P/RIB	CROPLAN	148	19.1	73	54.9
2300	A4646G2 RIB	VT2P	PRIDE Seeds	165	21.5	72	53.3
2300	MZ 1688DBR	VT2P	Maize Seeds	169	21.6	73	54.2
2300	MZ 1624DBR	VT2P	Maize Seeds	158	21.2	72	54.2
2300	E49K32 R	VT2P	Maize Seeds	178	20.1	73	55.0
2350	NK7837-3220	3220	NK	140	21.1	72	55.6
2350	OK20081VT2P/RIB	VT2P/RIB	CROPLAN	171	21.4	73	53.6
2375	CP2180VT2P/RIB	VT2P/RIB	CROPLAN	160	22.5	74	52.8
2375	HZ 1912	Agrisure 3120 EZR	Horizon Seeds	161	20.4	70	55.5
2400	PS 2563GSX RIB	GENSS	PICKSEED	179	23.0	74	54.2
2400	TH6182 VT2P	VT2P	Thunder Seed	173	21.7	71	53.0
2400	NK8005-3220	3220	NK	168	22.7	72	54.1
2400	A4939G2 RIB	VT2P	PRIDE Seeds	177	19.4	73	56.4
2400	PV 62282RIB	VT2P	Proven Seed	167	20.6	73	54.9
2425	255	VT2PRO	Northstar Genetics	165	21.3	72	53.4
2425	DKC31-85RIB	VT2P	DEKALB	191	21.5	70	52.9
2425	CP2112ASD/EZ	Agrisure Duracade	CROPLAN	160	22.4	72	53.2
2450	P8407AM	YGCB/HX1/LL/RR2	Pioneer Brand Seed	197	19.8	74	54.8
2450	NS EXP83	VT2PRO	Northstar Genetics	191	22.1	74	52.5
2450	CP2288VT2P/RIB	VT2P/RIB	CROPLAN	164	20.6	73	54.3
2450	HZ 2220	Agrisure 3010	Horizon Seeds	182	22.1	74	52.9
2475	PS 2570VT2P RIB	GENVT2P	PICKSEED	174	23.6	74	52.5
2500	DKC33-37RIB	VT2P	DEKALB	188	20.9	71	54.4
2500	CP2315VT2P/RIB	VT2P/RIB	CROPLAN	178	21.7	73	52.7
2500	PV 62384RIB	VT2P	Proven Seed	175	22.7	74	53.7
2550	P8588AM	YGCB/HX1/LL/RR3	Pioneer Brand Seed	174	22.8	73	53.0
2550	TH6185 VT2P	VT2P	Thunder Seed	197	21.7	72	53.0
2550	DKC35-88RIB	VT2P	DEKALB	182	22.0	74	53.6
2550	PV 62485RIB	VT2P	Proven Seed	190	20.7	73	53.2
2575	DKC35-37RIB	VT2P	DEKALB	178	23.0	74	52.7
2575	A5225G2 RIB	VT2P	PRIDE Seeds	177	20.5	73	54.9
2600	NK8204-3220	3220	NK	181	23.4	74	52.8
2650	NK8519-5222	5222	NK	174	25.5	77	52.6
2650	NK8618-5122	5122	NK	178	24.1	76	52.4
Site Average				160	20.5	71	54.7
CV				8.67	4.72	1.54	1.89
Sign Diff				Yes	Yes	Yes	Yes
LSD				22	1.6	2	1.7
Planting Date				May 13, 2021			
Harvest Date				October 12, 2021			

¹ Each company assigns a corn heat unit (CHU) rating to each of their hybrids. The CHU rating is a measure of relative maturity and is one criteria for choosing a hybrid suitable to your growing region.

² Seeds Canada provides a database for corn hybrids available in Canada, available at <https://seeds-canada.ca/corn-hybrid-database>.

Information provided includes technology, brand name and refuge requirements.

GRAIN CORN 2021 - ROSEBANK

Comments:

The grain corn hybrid trials were tested and the data published by the Manitoba Corn Committee (MCC).

The data presented is for one year only. Use with caution.

A target plant population of 32,000 plants per acre was used.

Yields are corrected to 15.5% moisture content. Moisture content is measured at time of harvest.

The MCC publishes the annual results with all the yearly data in their brochure, which is available by calling the Manitoba Crop Alliance (MCA) office.

The brochure is also available on the MCA website: www.mbcropalliance.ca

CHU ¹ Rating	Hybrid	Technology/Genetic Trait ²	Company	ROSEBANK			
				Yield (bu/ac)	Moisture (%)	Days to Siliage	Bushel Wt (lbs/bu)
2000	P7005AM	YGCB/HK1/LL/RR2	Pioneer Brand Seed	92	14.3	72	54.5
2025	TH4072 RR	RR2	Thunder Seed	106	19.1	76	55.9
2050	P7202AM	YGCB/HK1/LL/RR2	Pioneer Brand Seed	115	15.8	74	55.4
2050	P7211AM	YGCB/HK1/LL/RR2	Pioneer Brand Seed	131	13.2	72	52.6
2050	DKC20-23RIB	VT2P	DEKALB	107	15.3	74	57.5
2075	DKC21-36RIB	VT2P	DEKALB	131	15.7	76	56.8
2100	P7455R	RR2	Pioneer Brand Seed	147	16.5	75	56.7
2100	TH6875 VT2P	VT2P	Thunder Seed	147	19.6	76	56.3
2100	DKC24-06RIB	VT2P	DEKALB	150	19.6	77	57.6
2100	CP1440VT2P/RIB	VT2P/RIB	CROPLAN	173	19.4	77	55.1
2125	P7417AM	YGCB/HK1/LL/RR2	Pioneer Brand Seed	101	17.3	76	55.0
2150	P7527AM	YGCB/HK1/LL/RR2	Pioneer Brand Seed	158	17.5	77	55.2
2150	P7574AM	YGCB/HK1/LL/RR3	Pioneer Brand Seed	151	19.9	78	53.9
2150	MZ 1340DBR	VT2P	Maizex Seeds	131	18.9	75	56.0
2175	TH6977 VT2P	VT2P	Thunder Seed	188	20.7	75	56.9
2175	NS 276	VT2PRO	Northstar Genetics	145	21.0	78	55.5
2175	PV 61276RIB	VT2P	Proven Seed	167	18.6	76	55.6
2200	NS EXP77	VT2PRO	Northstar Genetics	141	20.3	77	57.8
2200	A4323G2 RIB	VT2P	PRIDE Seeds	146	21.3	75	57.5
2200	PV 61377RIB	VT2P	Proven Seed	131	24.0	77	54.1
2225	P7844AM	YGCB/HK1/LL/RR3	Pioneer Brand Seed	116	19.5	75	54.7
2225	TH6278 VT2P	VT2P	Thunder Seed	170	18.6	77	54.8
2250	P7861AM	YGCB/HK1/LL/RR2	Pioneer Brand Seed	126	19.8	77	55.1
2250	TH6079 VT2P	VT2P	Thunder Seed	162	22.4	77	55.4
2250	X21080A/VT2P	VT2P/RIB	CROPLAN	105	21.9	77	55.0
2250	PV 61180RIB	VT2P	Proven Seed	171	21.7	76	54.1
2250	PV 61479RIB	VT2P	Proven Seed	133	18.1	76	55.8
2250	MZ 1544DBR	VT2P	Maizex Seeds	179	20.1	78	54.3
2250	HZ 1685	Agrisure Viptera 3110	Horizon Seeds	160	20.3	78	56.0
2275	P7958AM	YGCB/HK1/LL/RR2	Pioneer Brand Seed	157	20.3	77	56.6
2275	PS 2333RR	RR2	PICKSEED	161	28.2	77	54.4
2275	DKC29-89RIB	VT2P	DEKALB	173	19.9	77	55.0
2275	A4514RR	RR2	PRIDE Seeds	122	21.7	78	54.5
2300	PS 2420RR	RR2	PICKSEED	103	30.7	76	52.6
2300	CP2123VT2P/RIB	VT2P/RIB	CROPLAN	147	17.7	77	54.8
2300	A4646G2 RIB	VT2P	PRIDE Seeds	153	20.1	77	54.0
2300	MZ 1688DBR	VT2P	Maizex Seeds	182	22.5	77	54.5
2300	MZ 1624DBR	VT2P	Maizex Seeds	154	18.3	77	56.2
2300	E49K32 R	VT2P	Maizex Seeds	193	20.7	77	54.7
2350	NK7837-3220	3220	NK	151	24.5	77	54.6
2350	CX20081VT2P/RIB	VT2P/RIB	CROPLAN	164	22.5	77	55.1
2375	CP2180VT2P/RIB	VT2P/RIB	CROPLAN	191	23.7	78	54.1
2375	HZ 1912	Agrisure 3120 EZR	Horizon Seeds	145	24.3	77	54.6
2400	PS 2563GSX RIB	GENSS	PICKSEED	162	27.1	80	53.7
2400	TH6182 VT2P	VT2P	Thunder Seed	161	23.2	78	54.3
2400	NK8005-3220	3220	NK	168	26.1	77	52.8
2400	A4939G2 RIB	VT2P	PRIDE Seeds	179	21.2	77	54.2
2400	PV 62282RIB	VT2P	Proven Seed	158	21.7	77	55.8
2425	255	VT2PRO	Northstar Genetics	167	21.0	78	54.7
2425	DKC31-85RIB	VT2P	DEKALB	165	22.4	77	54.3
2425	CP2112ASD/EZ	Agrisure Duracade	CROPLAN	167	25.4	78	53.0
2450	P8407AM	YGCB/HK1/LL/RR2	Pioneer Brand Seed	142	23.7	79	54.2
2450	NS EXP83	VT2PRO	Northstar Genetics	199	24.5	78	53.7
2450	CP2288VT2P/RIB	VT2P/RIB	CROPLAN	191	21.8	77	55.0
2450	HZ 2220	Agrisure 3010	Horizon Seeds	171	26.0	79	52.5
2475	PS 2570VT2P RIB	GENVT2P	PICKSEED	188	26.8	79	53.4
2500	DKC33-37RIB	VT2P	DEKALB	185	24.1	78	54.4
2500	CP2315VT2P/RIB	VT2P/RIB	CROPLAN	164	25.2	78	54.2
2500	PV 62384RIB	VT2P	Proven Seed	188	26.9	81	53.3
2550	P8588AM	YGCB/HK1/LL/RR3	Pioneer Brand Seed	158	23.7	78	53.5
2550	TH6185 VT2P	VT2P	Thunder Seed	149	27.0	77	52.9
2550	DKC35-88RIB	VT2P	DEKALB	174	25.3	79	53.7
2550	PV 62485RIB	VT2P	Proven Seed	184	23.0	78	53.8
2575	DKC35-37RIB	VT2P	DEKALB	180	27.1	79	52.9
2575	A5225G2 RIB	VT2P	PRIDE Seeds	160	24.0	78	53.9
2600	NK8204-3220	3220	NK	180	27.0	81	53.2
2650	NK8519-5222	5222	NK	133	30.0	83	52.8
2650	NK8618-5122	5122	NK	156	29.3	81	52.6
Site Average				153	21.5	77	54.7
CV				7.77	6.18	1.42	2.43
Sign Diff				Yes	Yes	Yes	Yes
LSD				19	2.2	2	2.1
Planting Date				May 5, 2021			
Harvest Date				October 5, 2021			

¹ Each company assigns a corn heat unit (CHU) rating to each of their hybrids. The CHU rating is a measure of relative maturity and is one criteria for choosing a hybrid suitable to your growing region.

² Seeds Canada provides a database for corn hybrids available in Canada, available at <https://seeds-canada.ca/corn-hybrid-database>.

Information provided includes technology, brand name and refuge requirements.

GRAIN CORN 2021 - HORNDEAN

Comments:

The grain corn hybrid trials were tested and the data published by the Manitoba Corn Committee (MCC).

The data presented is for one year only. Use with caution.

A target plant population of 32,000 plants per acre was used.

Yields are corrected to 15.5% moisture content. Moisture content is measured at time of harvest.

The MCC publishes the annual results with all the yearly data in their brochure, which is available by calling the Manitoba Crop Alliance (MCA) office.

The brochure is also available on the MCA website: www.mbcropalliance.ca

CHU ¹ Rating	Hybrid	Technology/ Genetic Trait ²	Company	HORNDEAN			
				Yield (bu/ac)	Moisture (%)	Days to Silking	Bushel Wt (lbs/bu)
2000	P7005AM	YGCB/HX1/LL/RR2	Pioneer Brand Seed	99	19.8	67	56.5
2025	TH4072 RR	RR2	Thunder Seed	135	22.3	70	54.2
2050	P7202AM	YGCB/HX1/LL/RR2	Pioneer Brand Seed	135	20.8	68	56.1
2050	P7211AM	YGCB/HX1/LL/RR2	Pioneer Brand Seed	118	19.2	66	55.9
2050	DKC20-23RIB	VT2P	DEKALB	101	19.7	69	58.4
2075	DKC21-36RIB	VT2P	DEKALB	134	20.8	71	55.9
2100	P7455R	RR2	Pioneer Brand Seed	140	20.1	70	55.8
2100	TH6875 VT2P	VT2P	Thunder Seed	152	21.7	72	55.4
2100	DKC24-06RIB	VT2P	DEKALB	130	21.3	71	56.1
2100	CP1440VT2P/RIB	VT2P/RIB	CROPLAN	143	21.9	72	54.7
2125	P7417AM	YGCB/HX1/LL/RR2	Pioneer Brand Seed	139	21.2	71	53.7
2150	P7527AM	YGCB/HX1/LL/RR2	Pioneer Brand Seed	140	20.5	73	54.9
2150	P7574AM	YGCB/HX1/LL/RR3	Pioneer Brand Seed	138	22.9	73	54.2
2150	MZ 1340DBR	VT2P	Maizex Seeds	121	20.8	71	56.1
2175	TH6977 VT2P	VT2P	Thunder Seed	174	21.4	71	54.9
2175	NS 276	VT2PRO	Northstar Genetics	155	23.0	74	54.7
2175	PV 61276RIB	VT2P	Proven Seed	148	22.6	70	56.4
2200	NS EXP77	VT2PRO	Northstar Genetics	141	23.0	71	55.6
2200	A4323G2 RIB	VT2P	PRIDE Seeds	127	22.2	72	56.6
2200	PV 61377RIB	VT2P	Proven Seed	134	25.1	71	54.0
2225	P7844AM	YGCB/HX1/LL/RR3	Pioneer Brand Seed	172	22.7	72	53.3
2225	TH6278 VT2P	VT2P	Thunder Seed	149	21.9	72	53.5
2250	P7861AM	YGCB/HX1/LL/RR2	Pioneer Brand Seed	140	23.9	72	54.4
2250	TH6079 VT2P	VT2P	Thunder Seed	151	22.3	72	55.2
2250	X21080A/VT2P	VT2P/RIB	CROPLAN	129	21.6	73	55.9
2250	PV 61180RIB	VT2P	Proven Seed	154	24.8	74	52.3
2250	PV 61479RIB	VT2P	Proven Seed	149	22.2	73	55.0
2250	MZ 1544DBR	VT2P	Maizex Seeds	165	21.7	73	54.0
2250	HZ 1685	Agrisure Viptera 3110	Horizon Seeds	133	22.7	73	55.4
2275	P7958AM	YGCB/HX1/LL/RR2	Pioneer Brand Seed	165	21.7	73	55.4
2275	PS 233RR	RR2	PICKSEED	152	24.5	73	54.2
2275	DKC29-89RIB	VT2P	DEKALB	149	22.9	72	53.8
2275	A4514RR	RR2	PRIDE Seeds	141	23.1	73	53.9
2300	PS 2420RR	RR2	PICKSEED	150	25.8	72	53.1
2300	CP2123VT2P/RIB	VT2P/RIB	CROPLAN	130	22.0	72	55.3
2300	A4646G2 RIB	VT2P	PRIDE Seeds	150	23.5	73	54.7
2300	MZ 1688DBR	VT2P	Maizex Seeds	157	23.3	73	53.6
2300	MZ 1624DBR	VT2P	Maizex Seeds	157	22.2	74	52.4
2300	E49K32 R	VT2P	Maizex Seeds	166	22.5	74	55.5
2350	NK7837-3220	3220	NK	133	24.3	73	54.3
2350	CK20081VT2P/RIB	VT2P/RIB	CROPLAN	179	23.9	73	53.2
2375	CP2180VT2P/RIB	VT2P/RIB	CROPLAN	165	24.6	75	53.4
2375	HZ 1912	Agrisure 3120 EZR	Horizon Seeds	137	24.6	74	54.3
2400	PS 2563GSX RIB	GENSS	PICKSEED	173	26.5	76	52.7
2400	TH6182 VT2P	VT2P	Thunder Seed	166	24.4	73	53.4
2400	NK8005-3220	3220	NK	175	24.5	74	53.5
2400	A4939G2 RIB	VT2P	PRIDE Seeds	139	23.0	74	54.7
2400	PV 62282RIB	VT2P	Proven Seed	162	23.7	73	55.5
2425	255	VT2PRO	Northstar Genetics	172	23.9	73	53.6
2425	DKC31-85RIB	VT2P	DEKALB	183	23.0	73	53.4
2425	CP2112ASD/EZ	Agrisure Duracade	CROPLAN	157	26.4	75	53.0
2450	P8407AM	YGCB/HX1/LL/RR2	Pioneer Brand Seed	151	24.2	76	52.3
2450	NS EXP83	VT2PRO	Northstar Genetics	201	24.7	75	52.1
2450	CP2288VT2P/RIB	VT2P/RIB	CROPLAN	159	23.7	73	53.4
2450	HZ 2220	Agrisure 3010	Horizon Seeds	176	25.0	75	52.9
2475	PS 2570VT2P RIB	GENVT2P	PICKSEED	158	24.9	77	53.8
2500	DKC33-37RIB	VT2P	DEKALB	174	24.0	74	54.2
2500	CP2315VT2P/RIB	VT2P/RIB	CROPLAN	165	23.2	74	54.8
2500	PV 62384RIB	VT2P	Proven Seed	153	26.5	78	53.0
2550	P8588AM	YGCB/HX1/LL/RR3	Pioneer Brand Seed	171	24.6	74	52.6
2550	TH6185 VT2P	VT2P	Thunder Seed	166	25.0	74	54.0
2550	DKC35-88RIB	VT2P	DEKALB	168	25.3	74	53.5
2550	PV 62485RIB	VT2P	Proven Seed	171	24.4	73	53.2
2575	DKC35-37RIB	VT2P	DEKALB	165	25.1	76	53.4
2575	A5225G2 RIB	VT2P	PRIDE Seeds	166	24.0	74	53.4
2600	NK8204-3220	3220	NK	171	27.1	77	52.3
2650	NK8519-5222	5222	NK	132	28.8	83	51.9
2650	NK8618-5122	5122	NK	179	27.4	78	52.1
Site Average				151	23.2	73	54.3
CV				9.47	5.75	1.26	2.11
Sign Diff				Yes	Yes	Yes	Yes
LSD				23	2.2	1	1.9
Planting Date				May 14, 2021			
Harvest Date				October 18, 2021			

¹ Each company assigns a corn heat unit (CHU) rating to each of their hybrids. The CHU rating is a measure of relative maturity and is one criteria for choosing a hybrid suitable to your growing region.

² Seeds Canada provides a database for corn hybrids available in Canada, available at <https://seeds-canada.ca/corn-hybrid-database>.

Information provided includes technology, brand name and refuge requirements.

GRAIN CORN 2021 - MACGREGOR

Comments:

The grain corn hybrid trials were tested and the data published by the Manitoba Corn Committee (MCC).

The data presented is for one year only. Use with caution.

A target plant population of 32,000 plants per acre was used.

Yields are corrected to 15.5% moisture content. Moisture content is measured at time of harvest.

The MCC publishes the annual results with all the yearly data in their brochure, which is available by calling the Manitoba Crop Alliance (MCA) office.

The brochure is also available on the MCA website: www.mbcropalliance.ca

CHU ¹ Rating	Hybrid	Technology/Genetic		Company	MACGREGOR			
		Trait ²			Yield (bu/ac)	Moisture (%)	Days to Silking	Bushel Wt (lbs/bu)
2000	P7005AM	YGCB/HX1/LL/RR2		Pioneer Brand Seeds	97	14.2	67	49.9
2025	TH4072 RR	RR2		Thunder Seed	124	16.1	71	50.9
2025	A3979G2 RIB	VT2P		PRIDE Seeds	168	17.3	69	48.0
2025	MZ1200DBR	VT2P		Maizex Seeds	137	17.8	70	51.7
2050	P7202AM	YGCB/HX1/LL/RR2		Pioneer Brand Seeds	108	15.5	68	50.4
2050	P7211AM	YGCB/HX1/LL/RR2		Pioneer Brand Seeds	131	14.2	69	48.1
2050	DKC20-23RIB	VT2P		DEKALB	96	15.6	70	49.8
2050	A3993G2 RIB	VT2P		PRIDE Seeds	154	15.5	69	50.0
2075	NS 271	VT2PRO		Northstar Genetics	136	15.4	68	50.0
2075	DKC21-36RIB	VT2P		DEKALB	133	16.5	71	51.6
2100	P7455R	RR2		Pioneer Brand Seeds	126	15.6	70	51.6
2100	TH6875 VT2P	VT2P		Thunder Seed	165	17.7	72	50.0
2100	DKC24-06RIB	VT2P		DEKALB	159	18.8	72	49.5
2100	CP1440VT2P/RIB	VT2P/RIB		CROPLAN	176	18.2	73	50.6
2125	P7417AM	YGCB/HX1/LL/RR2		Pioneer Brand Seeds	134	15.9	71	51.1
2150	P7527AM	YGCB/HX1/LL/RR2		Pioneer Brand Seeds	136	17.2	73	51.3
2150	P7574AM	YGCB/HX1/LL/RR3		Pioneer Brand Seeds	135	15.0	74	49.6
2150	MZ1340DBR	VT2P		Maizex Seeds	134	18.7	72	50.5
2175	TH6977 VT2P	VT2P		Thunder Seed	157	18.5	71	53.9
2175	NS 276	VT2PRO		Northstar Genetics	176	19.1	75	49.5
2175	PV 61276RIB	VT2P		Proven Seed	132	15.9	71	53.6
2200	PS 2320RR	RR2		PICKSEED	148	19.6	71	50.3
2200	NS EXP77	VT2PRO		Northstar Genetics	131	16.9	71	52.5
2200	A4329G2 RIB	VT2P		PRIDE Seeds	148	22.2	71	53.2
2200	PV 61377RIB	VT2P		Proven Seed	161	19.2	72	51.6
2200	HZ 1398	Agrisure 3010		Horizon Seeds	119	15.4	73	49.0
2200	Riel	GT		Greenfield Genetics	146	25.7	73	50.4
2225	P7844AM	YGCB/HX1/LL/RR3		Pioneer Brand Seeds	177	17.1	72	50.5
2225	PS 2321VT2P RIB	GENVT2P		PICKSEED	157	21.8	72	54.7
2225	TH6278 VT2P	VT2P		Thunder Seed	168	18.5	72	47.1
2250	P7861AM	YGCB/HX1/LL/RR2		Pioneer Brand Seeds	162	15.3	74	51.0
2250	BY Brava RR2	RR2		BrettYoung	161	22.8	74	49.9
2250	TH6079 VT2P	VT2P		Thunder Seed	148	16.0	73	51.1
2250	X21080A/VT2P	VT2P/RIB		CROPLAN	143	22.5	74	51.7
2250	PV 61180RIB	VT2P		Proven Seed	178	18.3	74	48.4
2250	PV 61479RIB	VT2P		Proven Seed	167	17.0	73	48.5
2250	MZ1544DBR	VT2P		Maizex Seeds	181	19.9	74	50.9
2250	HZ 1685	Agrisure Viptera 3110		Horizon Seeds	146	20.4	75	50.2
2275	P7958AM	YGCB/HX1/LL/RR2		Pioneer Brand Seeds	155	22.0	74	50.0
2275	PS 2333RR	RR2		PICKSEED	160	23.2	73	50.6
2275	DKC29-89RIB	VT2P		DEKALB	171	19.1	73	50.2
2300	PS 2420RR	RR2		PICKSEED	162	25.4	74	47.0
2300	CP2123VT2P/RIB	VT2P/RIB		CROPLAN	141	20.0	72	49.8
2300	A4646G2 RIB	VT2P		PRIDE Seeds	182	22.5	75	47.3
2300	MZ1688DBR	VT2P		Maizex Seeds	161	19.0	75	48.8
2300	MZ1624DBR	VT2P		Maizex Seeds	151	18.9	75	49.3
2300	Vernon	3010		Greenfield Genetics	140	26.2	76	54.2
2350	NK7837-3220	3220		NK	157	21.7	74	50.3
2350	CX20081VT2P/RIB	VT2P/RIB		CROPLAN	181	21.5	75	50.1
2375	BYM2130002BV	VT2P		BrettYoung	134	22.5	76	51.7
2375	CP2180VT2P/RIB	VT2P/RIB		CROPLAN	170	20.8	74	48.2
2375	HZ 1912	Agrisure 3120 EZR		Horizon Seeds	169	22.6	74	49.5
2400	TH6182 VT2P	VT2P		Thunder Seed	178	20.6	74	49.9
2400	NK9005-3220	3220		NK	148	23.6	74	54.0
2400	PV 62282RIB	VT2P		Proven Seed	163	22.2	74	52.2
2425	DKC31-85RIB	VT2P		DEKALB	170	20.9	74	50.0
2425	CP2112ASD/EZ	Agrisure Duracade		CROPLAN	132	24.0	75	47.8
2450	CP2288VT2P/RIB	VT2P/RIB		CROPLAN	173	21.7	75	51.5
2500	DKC33-37RIB	VT2P		DEKALB	167	21.8	74	52.4
2500	PV 62384RIB	VT2P		Proven Seed	176	24.0	77	50.2
2550	TH6185 VT2P	VT2P		Thunder Seed	156	24.9	74	50.4
2550	PV 62485RIB	VT2P		Proven Seed	175	19.1	74	50.2
2600	NK8204-3220	3220		NK	187	23.5	78	50.1
Site Average					153	19	74	50
CV					8.99	9.25	1.01	5.45
Sign Diff					Yes	Yes	Yes	No
LSD					22	2.9	1	4.5
Planting Date					May 12, 2021			
Harvest Date					October 8, 2021			

1 Each company assigns a corn heat unit (CHU) rating to each of their hybrids. The CHU rating is a measure of relative maturity and is one criteria for choosing a hybrid suitable to your growing region.

2 Seeds Canada provides a database for corn hybrids available in Canada, available at <https://seeds-canada.ca/corn-hybrid-database>.

Information provided includes technology, brand name and refuge requirements.

GRAIN CORN 2021 - ST. PIERRE

Comments:

The grain corn hybrid trials were tested and the data published by the Manitoba Corn Committee (MCC).

The data presented is for one year only. Use with caution.

A target plant population of 32,000 plants per acre was used.

Yields are corrected to 15.5% moisture content. Moisture content is measured at time of harvest.

The MCC publishes the annual results with all the yearly data in their brochure, which is available by calling the Manitoba Crop Alliance (MCA) office.

The brochure is also available on the MCA website: www.mbcropalliance.ca

CHU ¹ Rating	Hybrid	Technology/Genetic		ST. PIERRE			
		Trait ²	Company	Yield (bu/ac)	Moisture (%)	Days to Silking	Bushel Wt (lbs/bu)
2000	P7005AM	YGCB/HX1/LL/RR2	Pioneer Brand Seed	95	18.6	71	50.0
2025	TH4072 RR	RR2	Thunder Seed	113	23.3	74	50.0
2025	A3979G2 RIB	VT2P	PRIDE Seeds	124	21.4	74	49.8
2025	MZ1200DBR	VT2P	Maize Seeds	99	23.0	75	51.0
2050	P7202AM	YGCB/HX1/LL/RR2	Pioneer Brand Seed	81	20.4	73	49.8
2050	P7211AM	YGCB/HX1/LL/RR2	Pioneer Brand Seed	108	18.2	73	53.2
2050	DKC20-23RIB	VT2P	DEKALB	96	21.8	74	51.4
2050	A3999G2 RIB	VT2P	PRIDE Seeds	89	21.6	74	51.4
2075	NS 271	VT2PRO	Northstar Genetics	119	23.2	73	52.9
2075	DKC21-36RIB	VT2P	DEKALB	126	21.4	77	51.9
2100	P7455R	RR2	Pioneer Brand Seed	102	19.6	74	50.4
2100	TH6875 VT2P	VT2P	Thunder Seed	138	22.0	75	49.8
2100	DKC24-06RIB	VT2P	DEKALB	129	23.0	77	52.0
2100	CP1440VT2P/RIB	VT2P/RIB	CROPLAN	136	23.0	76	54.4
2125	P7417AM	YGCB/HX1/LL/RR2	Pioneer Brand Seed	127	21.8	76	49.6
2150	P7527AM	YGCB/HX1/LL/RR2	Pioneer Brand Seed	118	22.2	78	50.1
2150	P7574AM	YGCB/HX1/LL/RR3	Pioneer Brand Seed	119	23.9	78	52.6
2150	MZ1340DBR	VT2P	Maize Seeds	96	24.1	75	51.2
2175	TH6977 VT2P	VT2P	Thunder Seed	142	23.0	75	51.4
2175	NS 276	VT2PRO	Northstar Genetics	107	25.6	81	53.2
2175	PV61276RIB	VT2P	Proven Seed	115	23.0	77	52.4
2200	PS 2320RR	RR2	PICKSEED	124	25.5	76	50.0
2200	NS EXP77	VT2PRO	Northstar Genetics	87	23.0	76	48.8
2200	A4323G2 RIB	VT2P	PRIDE Seeds	98	22.4	78	50.9
2200	PV61377RIB	VT2P	Proven Seed	108	27.4	79	54.1
2200	HZ 1398	Agrisure 3010	Horizon Seeds	105	21.1	78	52.8
2200	Riel	GT	Greenfield Genetics	103	29.1	80	51.0
2225	P7844AM	YGCB/HX1/LL/RR3	Pioneer Brand Seed	125	21.8	78	52.7
2225	PS 2321VT2P RIB	GENVT2P	PICKSEED	122	25.7	77	52.7
2225	TH6278 VT2P	VT2P	Thunder Seed	111	22.8	77	47.6
2250	P7861AM	YGCB/HX1/LL/RR2	Pioneer Brand Seed	102	21.9	76	50.2
2250	BY Brava RR2	RR2	BrettYoung	129	26.0	79	52.0
2250	TH6079 VT2P	VT2P	Thunder Seed	133	25.0	78	53.5
2250	X21080A/VT2P	VT2P/RIB	CROPLAN	111	24.8	79	51.5
2250	PV61180RIB	VT2P	Proven Seed	119	24.0	79	51.9
2250	PV61479RIB	VT2P	Proven Seed	114	23.0	77	49.5
2250	MZ1544DBR	VT2P	Maize Seeds	124	24.2	80	49.8
2250	HZ 1685	Agrisure Viptera 3110	Horizon Seeds	112	22.9	80	47.6
2275	P7958AM	YGCB/HX1/LL/RR2	Pioneer Brand Seed	140	23.2	80	47.8
2275	PS 2333RR	RR2	PICKSEED	124	26.4	79	53.3
2275	DKC29-89RIB	VT2P	DEKALB	112	23.6	78	51.4
2300	PS 2420RR	RR2	PICKSEED	109	27.5	79	48.5
2300	CP2123VT2P/RIB	VT2P/RIB	CROPLAN	107	23.5	77	52.4
2300	A4646G2 RIB	VT2P	PRIDE Seeds	108	24.2	80	51.2
2300	MZ1688DBR	VT2P	Maize Seeds	99	24.3	79	49.5
2300	MZ1624DBR	VT2P	Maize Seeds	111	23.7	79	51.2
2300	Vernon	3010	Greenfield Genetics	121	27.7	80	54.1
2350	NK7837-3220	3220	NK	118	26.2	79	50.6
2350	CX20081VT2P/RIB	VT2P/RIB	CROPLAN	143	25.0	80	49.4
2375	BYM2130002BV	VT2P	BrettYoung	108	24.3	80	48.9
2375	CP2180VT2P/RIB	VT2P/RIB	CROPLAN	126	23.0	81	51.3
2375	HZ 1912	Agrisure 3120 EZR	Horizon Seeds	112	26.0	79	50.0
2400	TH6182 VT2P	VT2P	Thunder Seed	118	24.0	79	52.8
2400	NK8005-3220	3220	NK	121	26.2	82	47.9
2400	PV62282RIB	VT2P	Proven Seed	121	24.5	77	51.8
2425	DKC31-85RIB	VT2P	DEKALB	128	23.7	79	52.3
2425	CP2112ASD/EZ	Agrisure Duracade	CROPLAN	117	28.4	82	50.8
2450	CP2288VT2P/RIB	VT2P/RIB	CROPLAN	119	24.2	81	49.4
2500	DKC33-37RIB	VT2P	DEKALB	129	26.5	80	48.4
2500	PV62384RIB	VT2P	Proven Seed	102	25.4	83	53.9
2550	TH6185 VT2P	VT2P	Thunder Seed	145	27.4	82	53.1
2550	PV62485RIB	VT2P	Proven Seed	130	23.7	80	49.0
2600	NK8204-3220	3220	NK	129	26.9	84	50.2
Site Average				116	23.9	79	51.0
CV				12.18	6.18	1.05	6.74
Sign Diff				Yes	Yes	Yes	No
LSD				23	2.4	1	5.6
Planting Date				May 11, 2021			
Harvest Date				October 7, 2021			

1 Each company assigns a corn heat unit (CHU) rating to each of their hybrids. The CHU rating is a measure of relative maturity and is one criteria for choosing a hybrid suitable to your growing region.

2 Seeds Canada provides a database for corn hybrids available in Canada, available at <https://seeds-canada.ca/corn-hybrid-database>.

Information provided includes technology, brand name and refuge requirements.

SILAGE CORN 2021 - ELM CREEK

Comments:

The silage corn hybrid trial was tested and the data donated by the Manitoba Corn Committee.

The data presented is for one year only. Use with caution.

A target plant population of 32,000 plants per acre was used.

Yields are corrected to 65% moisture content.

CHU ¹	Hybrid	Technology/Genetic Trait ²	Distributor	ELM CREEK									
				65%									
				Yield (Mt/ac)	Moisture ³ (%)	Silk (50%)	TDN (%)	ADF (%)	NDF (%)	Milk/Acre ⁴ (lbs/ac)	Beef/Acre ⁵ (lbs/ac)	NE/Gain Mcal/kg	NE/Lact Mcal/kg
2100	CP1440VT2P/RIB	VT2P/RIB	CROPLAN	16.1	71.9	73	72.4	24.6	42.6	16737	1494	1.12	1.66
2150	TH4076 HDRR	RR2	Thunder Seed	16.9	73.2	80	71.6	25.3	46.9	15337	1557	1.10	1.64
2150	913S	RR2	Northstar Genetics	17.1	70.5	75	69.2	27.5	48.4	17453	1515	1.03	1.58
2150	AS1017RR EDF	RR2	PRIDE Seeds	18.1	71.0	74	73.4	23.7	41.1	17366	1700	1.14	1.68
2200	PS 2320RR	RR2	PICKSEED	15.2	71.6	74	74.6	22.5	41.5	15381	1456	1.18	1.71
2200	917S	RR2	Northstar Genetics	17.5	73.5	74	66.1	30.5	53.7	17411	1485	0.94	1.50
2200	PV 61177SRR	RR2	Proven Seed	17.7	71.8	75	74.6	22.5	41.1	13811	1693	1.18	1.71
2200	MS 7420R	RR2	Maizez Seeds	15.8	71.5	73	71.3	25.6	43.9	13864	1447	1.09	1.63
2200	Riel	GT	Greenfield Genetics	16.3	74.2	74	67.5	29.2	49.8	15599	1408	0.98	1.54
2225	PS 2321VT2P RIB	GENVT2P	PICKSEED	14.2	71.2	74	73.8	23.2	41.4	13917	1342	1.16	1.69
2250	BY Brava RR2	RR2	BrettYoung	17.4	72.5	74	72.6	24.4	43.5	16661	1624	1.12	1.66
2250	TH4126 RR	RR2	Thunder Seed	18.2	70.9	73	72.0	24.9	44.2	18018	1679	1.11	1.65
2250	X21080A/VT2P	VT2P/RIB	CROPLAN	15.3	71.5	73	72.0	24.9	42.9	14577	1415	1.11	1.65
2250	MS 8022R	RR2	Maizez Seeds	18.0	71.7	74	71.4	25.5	47.0	17914	1649	1.09	1.63
2275	PS 2339RR	RR2	PICKSEED	16.6	73.8	73	71.1	25.8	43.4	15904	1512	1.08	1.63
2275	A4514RR	RR2	PRIDE Seeds	16.8	72.9	75	71.8	25.1	41.1	13455	1551	1.10	1.64
2300	PS 2420RR	RR2	PICKSEED	15.1	72.1	73	69.2	27.6	47.6	15564	1337	1.03	1.58
2300	TH6180 VT2P	VT2P	Thunder Seed	17.7	69.7	69	72.9	24.1	42.9	15401	1652	1.13	1.67
2300	CP2123VT2P/RIB	VT2P/RIB	CROPLAN	16.1	71.3	73	71.3	25.6	43.4	12501	1473	1.09	1.63
2300	A4705HMRR	RR2	PRIDE Seeds	16.4	73.1	70	71.5	25.4	44.6	15519	1509	1.09	1.64
2300	MS 7733DBR	VT2P	Maizez Seeds	16.2	71.2	73	72.2	24.7	45.8	15723	1497	1.11	1.65
2300	HZ 1710	Agrisure 3010	Horizon Seeds	17.6	73.3	76	69.7	27.1	47.4	16621	1578	1.04	1.59
2300	Vernon	3010	Greenfield Genetics	16.5	72.0	75	69.9	26.9	46.9	15883	1481	1.05	1.60
2350	932S	RR2	Northstar Genetics	17.7	76.4	84	67.3	29.3	53.4	14649	1531	0.97	1.53
2350	CX20081VT2P/RIB	VT2P/RIB	CROPLAN	16.5	73.1	74	71.5	25.4	44.4	15307	1513	1.09	1.63
2350	AS1027RR EDF	RR2	PRIDE Seeds	18.7	70.9	75	73.0	24.1	41.9	16678	1753	1.13	1.67
2350	PV 612815RIB	VT2P	Proven Seed	16.7	71.1	72	73.1	23.9	41.0	16709	1568	1.14	1.68
2350	HZ 675	Agrisure 3010	Horizon Seeds	17.8	75.1	78	69.9	26.9	47.6	15182	1595	1.05	1.60
2375	BYM2130002BV	VT2P	BrettYoung	15.7	72.3	74	73.6	23.4	42.1	14518	1485	1.15	1.69
2375	BYM2130009TR	RR2	BrettYoung	19.0	69.9	74	71.0	25.9	46.0	19959	1731	1.08	1.62
2375	CP2180VT2P/RIB	VT2P/RIB	CROPLAN	16.3	71.8	75	68.3	28.4	49.1	16844	1425	1.00	1.56
2375	HZ 1912	Agrisure 3120 EZR	Horizon Seeds	16.9	69.8	74	75.8	21.4	39.3	16073	1645	1.21	1.74
2400	PS 2569GSX RIB	GENSS	PICKSEED	16.0	71.3	78	67.2	29.5	50.2	14091	1381	0.97	1.53
2400	BYM2132011TV	VT2P	BrettYoung	18.1	70.0	77	69.5	27.3	47.7	14900	1612	1.04	1.59
2400	A4939G2 RIB	VT2P	PRIDE Seeds	17.0	71.4	75	71.3	25.6	45.0	16162	1557	1.09	1.63
2400	AS1047RR EDF	RR2	PRIDE Seeds	21.7	73.1	75	75.3	21.8	41.9	18212	2098	1.20	1.73
2400	PV 62282RIB	VT2P	Proven Seed	17.7	72.7	75	70.3	26.5	45.3	15626	1596	1.06	1.61
2425	DKC31-85RIB	VT2P	DEKALB	16.2	71.5	74	76.1	21.1	39.0	16305	1584	1.22	1.75
2450	PS ExSeed LF RR	RR2	PICKSEED	18.1	75.9	82	69.0	27.8	50.7	15219	1601	1.02	1.57
2450	TH6183 VT2P	VT2P	Thunder Seed	16.7	71.5	76	69.3	27.5	46.9	14452	1483	1.03	1.58
2450	CP2288VT2P/RIB	VT2P/RIB	CROPLAN	16.4	72.0	75	72.8	24.2	42.9	15806	1534	1.13	1.67
2450	HZ 2220	Agrisure 3010	Horizon Seeds	19.8	71.8	78	65.1	31.4	52.8	18557	1658	0.91	1.48
2500	BYM2135010TR	RR2	BrettYoung	16.3	74.7	75	71.9	25.0	44.3	13661	1504	1.10	1.64
2500	DKC33-37RIB	VT2P	DEKALB	18.0	71.2	76	70.2	26.6	44.8	16009	1623	1.06	1.60
2500	CP2315VT2P/RIB	VT2P/RIB	CROPLAN	15.6	75.0	74	70.8	26.1	45.4	14689	1420	1.07	1.62
2500	PV 62384RIB	VT2P	Proven Seed	18.2	72.5	78	66.5	30.1	51.1	15877	1555	0.95	1.51
2500	VENZA R	RR2	Maizez Seeds	18.4	74.5	80	67.3	29.4	50.5	17354	1586	0.97	1.53
2550	TH6185 VT2P	VT2P	Thunder Seed	17.9	71.5	75	69.7	27.1	46.8	15569	1603	1.04	1.59
2550	PV 62485RIB	VT2P	Proven Seed	15.8	73.8	73	68.8	27.9	48.4	16782	1395	1.02	1.57
2550	HZ 2534	Agrisure Viptera 3220 EZR	Horizon Seeds	17.0	73.8	77	68.4	28.3	49.3	15973	1487	1.01	1.56
2550	Maxx	GT	Greenfield Genetics	17.5	74.6	79	68.9	27.9	49.1	16129	1547	1.02	1.57
2575	DKC34-57RIB	VT2P	DEKALB	16.3	72.2	75	68.1	28.6	48.5	15963	1424	1.00	1.55
2575	DKC35-37RIB	VT2P	DEKALB	17.5	73.2	78	69.8	27.0	47.0	15978	1567	1.04	1.59
2600	EXP86-21	VT2P	DEKALB	16.9	74.1	76	71.0	25.9	45.9	15693	1543	1.08	1.62
2650	CP2790VT2P/RIB	VT2P/RIB	CROPLAN	16.8	73.3	77	66.8	29.8	50.6	16683	1443	0.96	1.52
2675	CP2845VT2P/RIB	VT2P/RIB	CROPLAN	17.6	74.2	79	70.1	26.7	45.4	13895	1586	1.05	1.60
2675	CP2851VT2P/RIB	VT2P/RIB	CROPLAN	17.4	72.8	79	69.5	27.2	49.4	18695	1554	1.04	1.59
2700	HZ 3020	Agrisure GT	Horizon Seeds	19.5	73.2	81	71.3	25.6	45.7	15686	1784	1.09	1.63
2750	HZ 878	Agrisure Viptera 3220 EZR	Horizon Seeds	18.4	76.6	80	68.8	28.0	51.7	14753	1627	1.02	1.57
			Site Average	16.9	72.2	75							
			CV	10.74	2.62	0.93							
			Sign Diff	Yes	Yes	Yes							
			LSD	2.9	3.1	1							
			Planting Date	May 6, 2021									
			Harvest Date	August 26, 2021									

1 Each company assigns a corn heat unit (CHU) rating to each of their hybrids. The CHU rating is a measure of relative maturity and is one criteria for choosing a hybrid suitable for your growing region.

2 Seeds Canada provides a database for corn hybrids available in Canada, available at <https://seeds-canada.ca/corn-hybrid-database>. Information provided includes technology, brand name and refuge requirements.

3 Moisture content at harvest.

4 Milk per Acre was calculated using MILK2006, a model developed by the University of Wisconsin Extension Service.

5 Beef per Acre was calculated on the assumption that one pound of beef is produced for every six pounds of TDN.

SILAGE CORN 2021 - ST. PIERRE

Comments:

The silage corn hybrid trial was tested and the data donated by the Manitoba Corn Committee. The data presented is for one year only. Use with caution. A target plant population of 32,000 plants per acre was used. Yields are corrected to 65% moisture content.

CHU ¹	Hybrid	Technology/Genetic Trait ²	Distributor	ST. PIERRE										
				Yield (Mt/ac)	Moisture ³ (%)	Silk (50%)	TDN (%)	ADF (%)	NDF (%)	Milk/Acre ⁴ (lbs/ac)	Beef/Acre ⁵ (lbs/ac)	NE/Gain Mcal/kg	NE/Lact Mcal/kg	
2100	CP1440VT2P/RIB	VT2P/RIB	CROPLAN	12.1	67.4	80	73.4	23.6	41.1	11498	1139	1.15	1.68	
2150	TH4076 HRRR	RR2	Thunder Seed	10.1	71.0	85	69.7	27.1	46.4	8113	902	1.04	1.59	
2150	913S	RR2	Northstar Genetics	11.7	69.7	85	68.4	28.3	47.8	9916	1024	1.01	1.56	
2150	AS1017RR EDF	RR2	PRIDE Seeds	11.8	65.1	83	74.0	23.1	39.0	11365	1116	1.16	1.70	
2200	PS 2320RR	RR2	PICKSEED	9.8	66.4	79	72.7	24.3	42.2	9374	912	1.13	1.66	
2200	917S	RR2	Northstar Genetics	10.5	70.1	85	69.6	27.2	47.9	8930	935	1.04	1.59	
2200	PV 61177SRR	RR2	Proven Seed	10.4	70.7	84	76.4	20.9	37.8	9209	1014	1.23	1.75	
2200	MS 7420R	RR2	Maizex Seeds	10.9	65.2	80	73.3	23.8	42.2	10646	1024	1.14	1.68	
2200	Riel	GT	Greenfield Genetics	11.7	69.6	83	71.0	25.8	46.8	10319	1065	1.08	1.62	
2225	PS 2321VT2P RIB	GENVT2P	PICKSEED	11.0	68.0	79	70.6	26.2	45.2	9507	1001	1.07	1.61	
2250	BY Brava RR2	RR2	BrettYoung	11.2	70.8	82	72.8	24.2	43.6	9766	1050	1.13	1.67	
2250	TH4126 RR	RR2	Thunder Seed	11.3	68.9	80	73.3	23.7	43.8	10258	1058	1.14	1.68	
2250	X21080A\VT2P	VT2P/RIB	CROPLAN	9.9	69.8	82	72.8	24.2	44.3	7855	929	1.13	1.67	
2250	MS 8022R	RR2	Maizex Seeds	11.1	69.8	79	70.7	26.1	44.0	9742	1005	1.07	1.62	
2275	PS 2333RR	RR2	PICKSEED	11.2	68.1	82	70.1	26.8	47.0	9510	1005	1.05	1.60	
2275	A4514RR	RR2	PRIDE Seeds	10.3	71.1	84	73.4	23.6	40.8	9030	974	1.15	1.68	
2300	PS 2420RR	RR2	PICKSEED	9.1	68.9	84	72.9	24.1	42.9	8161	849	1.13	1.67	
2300	TH6180 VT2P	VT2P	Thunder Seed	11.2	68.3	81	69.1	27.7	49.5	10163	995	1.02	1.58	
2300	CP2123VT2P/RIB	VT2P/RIB	CROPLAN	10.5	67.7	82	74.4	22.7	42.9	9779	1000	1.17	1.71	
2300	A4705HMRR	RR2	PRIDE Seeds	10.4	69.7	81	72.8	24.2	42.1	9502	973	1.13	1.67	
2300	MS 7733DBR	VT2P	Maizex Seeds	11.1	68.6	81	73.7	23.4	41.7	9950	1044	1.15	1.69	
2300	HZ1710	Agrisure 3010	Horizon Seeds	11.7	71.2	85	70.5	26.3	46.3	11328	1059	1.07	1.61	
2300	Vernon	3010	Greenfield Genetics	9.6	70.6	84	71.1	25.8	46.2	9046	874	1.08	1.63	
2350	932S	RR2	Northstar Genetics	10.2	74.4	93	69.0	27.8	49.8	7769	904	1.02	1.57	
2350	CX20081VT2P/RIB	VT2P/RIB	CROPLAN	11.7	70.2	84	71.8	25.2	44.2	10078	1076	1.10	1.64	
2350	AS1027RR EDF	RR2	PRIDE Seeds	10.7	68.3	86	71.1	25.8	43.5	9919	979	1.08	1.62	
2350	PV 61281SRIB	VT2P	Proven Seed	10.7	69.5	81	73.8	23.3	43.0	10411	1010	1.16	1.69	
2350	HZ 67S	Agrisure 3010	Horizon Seeds	10.7	72.8	87	72.1	24.9	45.4	7535	986	1.11	1.65	
2375	BYM2130002BV	VT2P	BrettYoung	10.1	69.7	85	72.0	25.0	45.9	8104	928	1.11	1.65	
2375	BYM2130009TR	RR2	BrettYoung	11.6	71.0	83	71.9	25.0	46.1	10561	1067	1.10	1.65	
2375	CP2180VT2P/RIB	VT2P/RIB	CROPLAN	10.7	69.0	83	71.8	25.1	42.1	8781	986	1.10	1.64	
2375	HZ1912	Agrisure 3120 EZR	Horizon Seeds	11.8	68.0	82	71.3	25.6	42.8	11077	1077	1.09	1.63	
2400	PS 2563GSX RIB	GENSS	PICKSEED	11.2	69.5	86	71.8	25.2	43.5	9277	1029	1.10	1.64	
2400	BYM2132011TV	VT2P	BrettYoung	10.6	69.1	86	73.4	23.6	42.5	9371	1002	1.14	1.68	
2400	A4939G2 RIB	VT2P	PRIDE Seeds	10.7	69.5	83	69.0	27.8	46.2	8765	946	1.02	1.57	
2400	AS1047RR EDF	RR2	PRIDE Seeds	11.7	71.8	83	66.5	30.1	50.9	9407	994	0.95	1.51	
2400	PV 62282RIB	VT2P	Proven Seed	11.3	69.4	82	70.2	26.6	44.2	8914	1022	1.06	1.60	
2425	DKC31-85RIB	VT2P	DEKALB	10.3	68.9	80	69.1	27.7	47.1	9754	910	1.02	1.57	
2450	PS ExSeed LF RR	RR2	PICKSEED	11.7	74.2	92	69.3	27.5	50.8	9049	1042	1.03	1.58	
2450	TH6183 VT2P	VT2P	Thunder Seed	10.8	69.9	84	72.6	24.4	42.6	9078	1004	1.12	1.66	
2450	CP2288VT2P/RIB	VT2P/RIB	CROPLAN	10.9	69.7	83	67.5	29.2	47.6	10008	946	0.98	1.54	
2450	HZ 2220	Agrisure 3010	Horizon Seeds	11.4	70.2	86	67.1	29.6	48.7	10801	978	0.97	1.53	
2500	BYM2135010TR	RR2	BrettYoung	11.8	73.1	83	72.5	24.5	43.5	9621	1102	1.12	1.66	
2500	DKC33-37RIB	VT2P	DEKALB	11.1	70.4	86	73.3	23.7	42.5	9616	1041	1.14	1.68	
2500	CP2315VT2P/RIB	VT2P/RIB	CROPLAN	10.4	69.1	83	74.2	22.9	41.6	9460	993	1.17	1.70	
2500	PV 62384RIB	VT2P	Proven Seed	9.8	71.1	87	69.6	27.2	47.1	8595	874	1.04	1.59	
2500	VENZA R	RR2	Maizex Seeds	11.7	73.4	90	66.3	30.2	52.4	10376	993	0.95	1.51	
2550	TH6185 VT2P	VT2P	Thunder Seed	11.6	69.9	86	73.3	23.7	39.7	9495	1088	1.14	1.68	
2550	PV 62485RIB	VT2P	Proven Seed	11.4	70.4	83	72.9	24.1	41.6	10664	1063	1.13	1.67	
2550	HZ 2534	Agrisure Viptera 3220 EZR	Horizon Seeds	11.2	70.4	88	70.4	26.5	47.3	9161	1013	1.06	1.61	
2550	Maxx	GT	Greenfield Genetics	11.1	73.4	90	70.4	26.5	47.2	8946	998	1.06	1.61	
2575	DKC34-57RIB	VT2P	DEKALB	9.9	71.5	84	71.5	25.4	43.9	8342	904	1.09	1.63	
2575	DKC35-37RIB	VT2P	DEKALB	11.3	70.0	85	70.2	26.7	47.2	9626	1020	1.06	1.60	
2600	EXP86-21	VT2P	DEKALB	10.1	72.6	87	71.8	25.2	43.7	7269	930	1.10	1.64	
2650	CP2790VT2P/RIB	VT2P/RIB	CROPLAN	11.7	71.1	84	71.4	25.5	44.0	9470	1068	1.09	1.63	
2675	CP2845VT2P/RIB	VT2P/RIB	CROPLAN	11.6	72.0	87	71.4	25.5	43.8	9420	1059	1.09	1.63	
2675	CP2851VT2P/RIB	VT2P/RIB	CROPLAN	11.9	70.3	87	68.4	28.3	48.1	10611	1048	1.01	1.56	
2700	HZ 3020	Agrisure GT	Horizon Seeds	12.2	72.3	89	71.5	25.4	45.0	9767	1117	1.09	1.63	
2750	HZ 878	Agrisure Viptera 3220 EZR	Horizon Seeds	10.9	74.8	91	72.1	24.9	44.9	8721	1007	1.11	1.65	
Site Average				10.8	69.6	84								
CV				9.37	1.79	1.15								
Sign Diff				Yes	Yes	Yes								
LSD				1.6	2.0	2								
Planting Date				May 7, 2021										
Harvest Date				September 8, 2021										

1 Each company assigns a corn heat unit (CHU) rating to each of their hybrids. The CHU rating is a measure of relative maturity and is one criteria for choosing a hybrid suitable for your growing region.
 2 Seeds Canada provides a database for corn hybrids available in Canada, available at <https://seeds-canada.ca/corn-hybrid-database>. Information provided includes technology, brand name and refuge requirements.
 3 Moisture content at harvest.
 4 Milk per Acre was calculated using MILK2006, a model developed by the University of Wisconsin Extension Service.
 5 Beef per Acre was calculated on the assumption that one pound of beef is produced for every six pounds of TDN.

SILAGE CORN 2021 - ARBORG

Comments:

The silage corn hybrid trial was tested and the data donated by the Manitoba Corn Committee. The data presented is for one year only. Use with caution.
 A target plant population of 32,000 plants per acre was used.
 Yields are corrected to 65% moisture content.

CHU ¹	Hybrid	Technology/Genetic Trait ²	Distributor	ARBORG									
				65% Yield (Mt/ha)	Moisture ³ (%)	Silk (50%)	TDN (%)	ADF (%)	NDF (%)	Milk/Acre ⁴ (lbs/ac)	Beef/Acre ⁵ (lbs/ac)	NE/Gain Mcal/kg	NE/Lact Mcal/kg
2050	DKC20-23RIB	VT2P	DEKALB	8.7	63.3	74	77.0	20.2	36.9	7707	864	1.24	1.77
2050	Rustler	GT	Greenfield Genetics	9.8	66.4	74	76.9	20.4	39.7	8014	970	1.24	1.77
2075	DKC21-36RIB	VT2P	DEKALB	9.8	63.9	74	72.2	24.8	44.9	5468	910	1.11	1.65
2100	TH6875-VT2P	VT2P	Thunder Seed	10.1	67.4	72	75.3	21.8	38.9	7585	973	1.20	1.73
2100	DKC24-06RIB	VT2P	DEKALB	10.4	65.8	74	75.2	21.9	38.0	8796	1004	1.20	1.73
2100	CP1440V-T2P/RIB	VT2P/RIB	CROPLAN	11.2	66.4	76	78.5	18.9	35.1	10232	1124	1.28	1.81
2150	TH4076 HDRR	RR2	Thunder Seed	10.0	69.1	78	77.6	19.7	36.4	8019	993	1.26	1.79
2150	913S	RR2	Northstar Genetics	10.0	70.2	78	78.6	18.7	37.2	8170	1012	1.29	1.81
2150	AS1017RR EDF	RR2	PRIDE Seeds	10.5	66.8	78	75.5	21.7	41.5	8526	1016	1.20	1.73
2200	PS 2320RR	RR2	PICKSEED	11.4	65.1	74	77.0	20.2	36.2	8087	1122	1.24	1.77
2200	PV 611775RR	RR2	Proven Seed	10.6	68.9	77	76.2	21.0	40.0	8809	1038	1.22	1.75
2200	PV 61377RIB	VT2P	Proven Seed	10.2	65.9	75	77.2	20.0	37.8	8087	1009	1.25	1.78
2200	MS 7420R	RR2	Maizex Seeds	11.1	64.1	74	75.9	21.3	39.7	7373	1084	1.21	1.74
2250	TH4126 RR	RR2	Thunder Seed	10.8	68.2	76	74.7	22.4	41.0	8651	1031	1.18	1.71
2250	XZ1080A-VT2P	VT2P/RIB	CROPLAN	9.5	67.1	75	71.1	25.7	45.9	6178	870	1.08	1.63
2250	PV 61479RIB	VT2P	Proven Seed	9.6	68.2	75	78.3	19.1	35.1	8379	963	1.28	1.80
2250	MS 8022R	RR2	Maizex Seeds	12.0	69.4	75	76.9	20.4	36.9	9119	1186	1.24	1.77
2275	PS 2333RR	RR2	PICKSEED	9.2	68.6	79	77.3	20.0	39.2	7226	915	1.25	1.78
2275	DKC29-89RIB	VT2P	DEKALB	9.3	67.3	77	76.7	20.5	39.4	6125	912	1.23	1.76
2275	A4514RR	RR2	PRIDE Seeds	9.6	68.0	77	72.6	24.4	43.3	7533	898	1.12	1.66
2300	PS 2420RR	RR2	PICKSEED	10.3	68.0	75	75.4	21.7	40.6	6992	993	1.20	1.73
2300	TH6180-VT2P	VT2P	Thunder Seed	11.8	66.5	77	74.0	23.0	40.5	9667	1122	1.16	1.70
2300	CP2123V-T2P/RIB	VT2P/RIB	CROPLAN	10.5	66.4	76	75.9	21.3	37.7	7902	1019	1.21	1.74
2300	A4705-HVRR	RR2	PRIDE Seeds	9.9	67.4	73	75.6	21.6	39.1	6496	964	1.20	1.74
2300	HZ 1710	Agrisure 3010	Horizon Seeds	10.5	71.1	79	77.1	20.1	38.5	8547	1040	1.25	1.77
2350	932S	RR2	Northstar Genetics	11.8	72.8	84	74.0	23.1	42.2	7450	1119	1.16	1.70
2350	HZ 675	Agrisure 3010	Horizon Seeds	10.5	71.3	79	76.4	20.8	37.0	9312	1026	1.23	1.76
2375	HZ 1912	Agrisure 3120 EZR	Horizon Seeds	8.3	69.8	79	77.6	19.7	37.9	6658	827	1.26	1.78
2450	HZ 2220	Agrisure 3010	Horizon Seeds	11.6	69.1	80	77.9	19.5	36.6	9562	1160	1.27	1.79
Site Average				10.3	67.9	77							
CV				7.73	2.54	2.15							
Sign Diff				Yes	Yes	Yes							
LSD				1.3	2.8	3							
Planting Date				May 21, 2021									
Harvest Date				September 22, 2021									

1 Each company assigns a corn heat unit (CHU) rating to each of their hybrids. The CHU rating is a measure of relative maturity and is one criteria for choosing a hybrid suitable for your growing region.
 2 Seeds Canada provides a database for corn hybrids available in Canada, available at <https://seeds-canada.ca/corn-hybrid-database>. Information provided includes technology, brand name and refuge requirements.
 3 Moisture content at harvest.
 4 Milk per Acre was calculated using MILK2006, a model developed by the University of Wisconsin Extension Service.
 5 Beef per Acre was calculated on the assumption that one pound of beef is produced for every six pounds of TDN.

2-YEAR DATA

GRAIN CORN - CARMAN - 2019/2020 SUMMARY

Comments:

The grain corn hybrid trials were tested and the data published by the Manitoba Corn Committee (MCC).

Target plant population of 32,000 plants per acre was used.

Yields are corrected to 15.5% moisture content. Moisture content is measured at time of harvest.

The MCC publishes the annual results with all the yearly data in their brochure, which is available by calling the Manitoba Crop Alliance (MCA) office.

The brochure is also available on the MCA website: www.mbcropalliance.ca

CHU	Hybrid	Technology/ Genetic Trait(s)	Company	CARMAN - 2020				CARMAN - 2019				2019/2020			
				Yield (bu/ac)	Moisture (%)	Days to Silking	Bushel Wt (lbs/bu)	Yield (bu/ac)	Moisture (%)	Days to Silking	Bushel Wt (lbs/bu)	Yield (bu/ac)	Moisture (%)	Bushel Wt (lbs/bu)	
2000	P7005AM	YGCB/HX1/LL/RR2	Pioneer Brand Seeds	141	14.5	55	57.8	--	--	--	--	--	--	--	
2050	P7202AM	YGCB/HX1/LL/RR2	Pioneer Brand Seeds	177	15.8	60	52.8	137	22.4	69	53.7	157	19.1	53.3	
2050	P7211AM	YGCB/HX1/LL/RR2	Pioneer Brand Seeds	145	16.3	58	54.7	146	23.1	69	52.7	145	19.7	53.7	
2100	P7417R	RR2	Pioneer Brand Seeds	168	15.8	61	54.6	158	22.8	72	53.1	163	19.3	53.8	
2100	P7455R	RR2	Pioneer Brand Seeds	151	17.5	58	56.5	163	25.2	71	52.9	157	21.4	54.7	
2125	P7417AM	YGCB/HX1/LL/RR2	Pioneer Brand Seeds	164	16.4	62	54.9	155	22.8	73	52.8	160	19.6	53.9	
2150	DKC26-40RIB	VT2P	DEKALB	168	18.8	63	57.1	--	--	--	--	--	--	--	
2150	P7527AM	YGCB/HX1/LL/RR2	Pioneer Brand Seeds	190	18.3	64	53.5	160	24.6	74	51.7	175	21.5	52.6	
2175	PV 61276RIB	VT2P	Proven Seed	139	18.6	65	55.2	--	--	--	--	--	--	--	
2200	EXP77-20	VT2P	DEKALB	163	20.4	66	54.0	--	--	--	--	--	--	--	
2200	P7861R	RR2	Pioneer Brand Seeds	174	17.9	64	52.9	--	--	--	--	--	--	--	
2200	A4323G2 RIB	VT2P	PRIDE Seeds	177	19.9	62	57.4	--	--	--	--	--	--	--	
2200	TH6977 VT2P	VT2P	Thunder Seed	182	17.4	63	53.2	177	25.8	73	52.4	179	21.6	52.8	
2250	P7861AM	YGCB/HX1/LL/RR2	Pioneer Brand Seeds	181	19.6	63	52.9	165	24.9	73	52.1	173	22.3	52.5	
2250	HZ 1685	Agrisure Viptera 3110	Horizon Seeds	176	20.0	65	55.2	--	--	--	--	--	--	--	
2250	TH6079 VT2P	VT2P	Thunder Seed	165	19.3	64	52.9	180	25.5	73	51.9	172	22.4	52.4	
2250	MZ 1544DBR	VT2P	Maizex Seeds	206	15.5	65	54.3	--	--	--	--	--	--	--	
2250	Taber	3010	Greenfield Genetics	152	19.2	65	55.8	--	--	--	--	--	--	--	
2275	DKC29-89RIB	VT2P	DEKALB	193	17.5	64	52.8	182	23.8	73	51.4	187	20.6	52.1	
2275	P7940AM	YGCB/HX1/LL/RR2	Pioneer Brand Seeds	175	18.2	63	53.8	170	24.8	73	52.7	172	21.5	53.3	
2275	P7958AM	YGCB/HX1/LL/RR2	Pioneer Brand Seeds	180	18.1	64	55.1	--	--	--	--	--	--	--	
2275	PS 2333RR	RR2	PICKSEED	171	24.3	66	53.2	177	26.2	74	53.4	174	25.2	53.3	
2300	PV 61180RIB	VT2P	Proven Seed	166	19.6	65	51.4	193	26.0	74	51.1	179	22.8	51.2	
2300	A4646G2 RIB	VT2P	PRIDE Seeds	189	16.1	64	54.8	161	25.3	75	51.1	175	20.7	53.0	
2300	MZ 1688DBR	VT2P	Maizex Seeds	181	18.4	66	53.5	180	25.3	75	52.4	180	21.8	53.0	
2300	MZ 1624DBR	VT2P	Maizex Seeds	168	19.0	65	54.6	184	25.9	75	52.6	176	22.5	53.6	
2300	E49K32 R	VT2P	Maizex Seeds	172	18.7	65	54.1	198	25.3	73	52.2	185	22.0	53.1	
2350	HZ 1912	Agrisure 3120 EZR	Horizon Seeds	177	20.3	66	54.8	184	27.0	75	51.6	180	23.6	53.2	
2350	191	VT2PRIB	NorthStar Genetics	203	19.1	65	52.3	--	--	--	--	--	--	--	
2350	TH6081 3220	3220	Thunder Seed	162	20.5	65	53.7	170	26.5	76	51.7	166	23.5	52.7	
2375	TH7681 VT2P	VT2P	Thunder Seed	187	16.6	66	54.5	154	25.3	75	52.4	170	20.9	53.4	
2375	CP2180VT2P/RIB	VT2P	CROPLAN	183	17.1	66	53.5	--	--	--	--	--	--	--	
2400	DKC33-78RIB	VT2P	DEKALB	178	19.4	66	53.0	172	24.5	75	52.5	175	21.9	52.8	
2400	PV 62282RIB	VT2P	Proven Seed	182	19.9	66	52.8	171	25.7	75	52.4	177	22.8	52.6	
2400	P8234AM	YGCB/HX1/LL/RR2	Pioneer Brand Seeds	190	20.2	65	52.2	172	26.2	74	50.5	181	23.2	51.3	
2400	A4939G2 RIB	VT2P	PRIDE Seeds	165	17.0	67	54.0	194	24.7	75	52.0	180	20.9	53.0	
2400	255	VT2PRIB	NorthStar Genetics	184	21.9	65	51.9	188	26.2	75	51.6	186	24.0	51.8	
2425	DKC31-85RIB	VT2P	DEKALB	204	17.6	64	53.1	--	--	--	--	--	--	--	
2425	P8352AM	YGCB/HX1/LL/RR2	Pioneer Brand Seeds	189	22.1	66	50.5	173	23.6	73	52.7	181	22.8	51.6	
2425	TH6182 VT2P	VT2P	Thunder Seed	183	19.0	65	52.5	--	--	--	--	--	--	--	
2425	TH6982 VT2P	VT2P	Thunder Seed	176	20.0	65	53.2	170	24.8	74	52.3	173	22.4	52.8	
2450	P8407AM	YGCB/HX1/LL/RR2	Pioneer Brand Seeds	232	22.6	67	50.4	193	26.5	74	51.4	213	24.6	50.9	
2450	HZ 2220	Agrisure 3010	Horizon Seeds	201	21.8	67	52.3	--	--	--	--	--	--	--	
2450	HZ 2534	Agrisure Viptera3220 EZR	Horizon Seeds	170	24.1	69	49.2	--	--	--	--	--	--	--	
2450	CP2288VT2P/RIB	VT2P	CROPLAN	193	20.9	66	53.1	185	25.4	74	51.5	189	23.2	52.3	
2450	E52V92 R	VT2P	Maizex Seeds	192	20.2	66	53.4	176	25.9	76	51.2	184	23.1	52.3	
2500	DKC33-37RIB	VT2P	DEKALB	202	20.3	66	53.4	--	--	--	--	--	--	--	
2500	PV 62384RIB	VT2P	Proven Seed	190	20.1	66	52.5	188	26.6	76	50.8	189	23.4	51.7	
2500	CP2315VT2P/RIB	VT2P	CROPLAN	208	22.3	65	52.0	--	--	--	--	--	--	--	
2550	PV 62485RIB	VT2P	Proven Seed	197	20.5	65	50.7	--	--	--	--	--	--	--	
2550	TH6185 VT2P	VT2P	Thunder Seed	204	21.2	65	52.0	--	--	--	--	--	--	--	
2550	CP2417VT2P/RIB	VT2P	CROPLAN	190	17.1	66	53.2	--	--	--	--	--	--	--	
2575	AS225G2 RIB	VT2P	PRIDE Seeds	195	22.3	66	52.1	192	25.5	75	51.6	194	23.9	51.8	
2625	CP2587VT2P/RIB	VT2P	CROPLAN	175	21.7	67	52.3	175	26.5	76	50.8	175	24.1	51.5	
2650	CP2790VT2P/RIB	VT2P	CROPLAN	207	21.0	66	51.4	--	--	--	--	--	--	--	
2675	CP2845VT2P/RIB	VT2P	CROPLAN	219	22.4	66	54.3	179	28.7	76	49.6	199	25.5	51.9	
2675	CP2851VT2P/RIB	VT2P	CROPLAN	205	21.2	66	51.6	--	--	--	--	--	--	--	
2700	CP2965VT2P/RIB	VT2P	CROPLAN	165	23.7	68	50.5	190	28.7	78	50.5	177	26.2	50.5	
Site Average				181	19.5	65	53.3	173	25.6	74	52.0				
CV				7.05	4.19	2.84	2.84	7.00	3.96	1.15	1.60				
Sign. Diff.				Yes	Yes	Yes	Yes	Yes	Yes	Yes	Yes				
LSD				21	1.3	3	2.4	20	1.6	1	1.3				
Planting Date:				May 20, 2020				May 15, 2019							
Harvest Date:				October 13, 2020				October 31, 2019							

1 Each company assigns a corn heat unit (CHU) rating to each of their hybrids. The CHU rating is a measure of relative maturity and is one criteria for choosing a hybrid suitable to your growing region.

2 Seeds Canada provides a database for corn hybrids available in Canada, available at <https://seeds-canada.ca/corn-hybrid-database>. Information provided includes technology, brand name and refuge requirements.

GRAIN CORN - ROSEBANK - 2019/2020 SUMMARY

Comments:

The grain corn hybrid trials were tested and the data published by the Manitoba Corn Committee (MCC).

A target plant population of 32,000 plants per acre was used.

Yields are corrected to 15.5% moisture content. Moisture content is measured at time of harvest.

The MCC publishes the annual results with all the yearly data in their brochure, which is available by calling the Manitoba Crop Alliance (MCA) office.

The brochure is also available on the MCA website: www.mbcropalliance.ca

CHU	Hybrid	Technology/Genetic Trait(s)	Company	ROSEBANK - 2020				ROSEBANK - 2019			2019/2020			
				Yield (bu/ac)	Moisture (%)	Days to Silking	Bushel Wt (lbs/bus)	Yield (bu/ac)	Moisture (%)	Bushel Wt (lbs/bus)	Yield (bu/ac)	Moisture (%)	Bushel Wt (lbs/bus)	
2000	P7005AM	YGCB/HX1/LL/RR2	Pioneer Brand Seeds	169	20.4	63	52.2	--	--	--	--	--	--	
2050	P7202AM	YGCB/HX1/LL/RR2	Pioneer Brand Seeds	181	22.0	64	50.9	167	24.0	52.7	174	23.0	51.8	
2050	P7211AM	YGCB/HX1/LL/RR2	Pioneer Brand Seeds	190	22.5	64	49.6	183	23.0	52.1	187	22.8	50.9	
2100	P7417R	RR2	Pioneer Brand Seeds	190	21.2	65	49.9	184	23.4	51.2	187	22.3	50.5	
2100	P7455R	RR2	Pioneer Brand Seeds	168	23.8	66	51.4	204	24.9	53.5	186	24.4	52.5	
2125	P7417AM	YGCB/HX1/LL/RR2	Pioneer Brand Seeds	187	21.8	67	50.1	191	24.2	51.2	189	23.0	50.6	
2150	DKC26-40RIB	VT2P	DEKALB	197	28.1	66	50.7	--	--	--	--	--	--	
2150	P7527AM	YGCB/HX1/LL/RR2	Pioneer Brand Seeds	202	25.3	68	50.0	210	26.2	51.1	206	25.8	50.6	
2175	PV 61276RIB	VT2P	Proven Seed	192	26.9	66	50.3	--	--	--	--	--	--	
2200	EXP77-20	VT2P	DEKALB	205	30.2	68	49.6	--	--	--	--	--	--	
2200	P7861R	RR2	Pioneer Brand Seeds	209	25.5	67	48.3	--	--	--	--	--	--	
2200	A4329G2 RIB	VT2P	PRIDE Seeds	203	26.9	65	51.9	--	--	--	--	--	--	
2200	TH6977 VT2P	VT2P	Thunder Seed	202	27.4	66	48.9	217	28.5	51.7	209	28.0	50.3	
2250	P7861AM	YGCB/HX1/LL/RR2	Pioneer Brand Seeds	223	28.0	67	49.0	182	28.4	50.8	202	28.2	49.9	
2250	HZ 1685	Agrisure Viptera 3110	Horizon Seeds	210	30.9	71	50.2	--	--	--	--	--	--	
2250	TH6079 VT2P	VT2P	Thunder Seed	202	28.7	68	48.7	205	29.5	51.8	203	29.1	50.3	
2250	MZ 1544DBR	VT2P	Maizex Seeds	221	27.7	68	48.4	--	--	--	--	--	--	
2250	Taber	3010	Greenfield Genetics	186	29.5	69	51.3	--	--	--	--	--	--	
2275	DKC29-89RIB	VT2P	DEKALB	220	26.9	69	49.0	223	26.8	51.6	221	26.9	50.3	
2275	P7940AM	YGCB/HX1/LL/RR2	Pioneer Brand Seeds	199	26.8	67	49.8	197	27.7	51.2	198	27.3	50.5	
2275	P7958AM	YGCB/HX1/LL/RR2	Pioneer Brand Seeds	194	26.9	68	49.9	--	--	--	--	--	--	
2275	PS 2333RR	RR2	PICKSEED	202	34.8	67	49.4	207	34.1	52.6	204	34.5	51.0	
2300	PV 61180RIB	VT2P	Proven Seed	216	28.3	68	48.9	226	29.9	51.1	221	29.1	50.0	
2300	A4646G2 RIB	VT2P	PRIDE Seeds	192	25.8	69	49.7	185	27.5	51.2	189	26.7	50.5	
2300	MZ 1688DBR	VT2P	Maizex Seeds	192	27.5	68	49.4	207	29.2	51.3	199	28.4	50.3	
2300	MZ 1624DBR	VT2P	Maizex Seeds	196	28.2	70	49.4	203	30.0	52.2	199	29.1	50.8	
2300	E49K32 R	VT2P	Maizex Seeds	224	30.6	69	48.8	207	29.9	51.1	215	30.3	50.0	
2350	HZ 1912	Agrisure 3120 EZR	Horizon Seeds	211	29.1	69	51.0	204	29.7	51.8	207	29.4	51.4	
2350	191	VT2PRIB	NorthStar Genetics	206	29.8	70	47.7	--	--	--	--	--	--	
2350	TH6081 3220	3220	Thunder Seed	187	29.7	66	50.5	192	30.5	51.9	190	30.1	51.2	
2375	TH7681 VT2P	VT2P	Thunder Seed	206	28.1	69	49.2	189	30.8	50.7	197	29.5	50.0	
2375	CP2180VT2P/RIB	VT2P	CROPLAN	213	28.1	69	47.6	--	--	--	--	--	--	
2400	DKC33-78RIB	VT2P	DEKALB	200	28.1	69	49.5	191	31.8	51.1	196	30.0	50.3	
2400	PV 62282RIB	VT2P	Proven Seed	202	28.8	69	49.3	212	31.1	51.9	207	30.0	50.6	
2400	P8234AM	YGCB/HX1/LL/RR2	Pioneer Brand Seeds	196	28.2	70	47.8	197	28.7	50.4	197	28.5	49.1	
2400	A4939G2 RIB	VT2P	PRIDE Seeds	210	29.0	69	48.9	224	29.1	50.9	217	29.1	49.9	
2400	255	VT2PRIB	NorthStar Genetics	214	30.4	69	48.2	207	31.1	50.9	210	30.8	49.6	
2425	DKC31-85RIB	VT2P	DEKALB	227	28.2	69	47.6	--	--	--	--	--	--	
2425	P8352AM	YGCB/HX1/LL/RR2	Pioneer Brand Seeds	214	30.4	69	46.9	201	26.3	51.5	207	28.4	49.2	
2425	TH6182 VT2P	VT2P	Thunder Seed	197	30.1	68	47.9	--	--	--	--	--	--	
2425	TH6982 VT2P	VT2P	Thunder Seed	195	30.5	68	48.9	206	28.7	52.1	201	29.6	50.5	
2450	P8407AM	YGCB/HX1/LL/RR2	Pioneer Brand Seeds	232	32.0	70	45.8	203	33.2	48.4	217	32.6	47.1	
2450	HZ 2220	Agrisure 3010	Horizon Seeds	196	32.1	70	48.2	--	--	--	--	--	--	
2450	HZ 2534	Agrisure Viptera 3220 EZR	Horizon Seeds	203	37.0	74	49.1	--	--	--	--	--	--	
2450	CP2288VT2P/RIB	VT2P	CROPLAN	208	29.8	69	49.6	208	32.6	51.1	208	31.2	50.3	
2450	E52V92 R	VT2P	Maizex Seeds	211	28.4	69	49.3	206	30.1	51.0	209	29.3	50.2	
2500	DKC33-37RIB	VT2P	DEKALB	219	30.3	69	48.6	--	--	--	--	--	--	
2500	PV 62384RIB	VT2P	Proven Seed	232	29.6	70	49.0	217	33.2	50.6	225	31.4	49.8	
2500	CP2315VT2P/RIB	VT2P	CROPLAN	213	31.8	69	48.3	--	--	--	--	--	--	
2550	PV 62485RIB	VT2P	Proven Seed	216	31.0	69	47.5	--	--	--	--	--	--	
2550	TH6185 VT2P	VT2P	Thunder Seed	230	31.1	69	47.9	--	--	--	--	--	--	
2550	CP2417VT2P/RIB	VT2P	CROPLAN	202	29.0	70	48.8	--	--	--	--	--	--	
2575	A5225G2 RIB	VT2P	PRIDE Seeds	208	30.8	69	49.4	227	33.2	50.6	217	32.0	50.0	
2625	CP2587VT2P/RIB	VT2P	CROPLAN	199	31.8	71	48.3	217	34.2	49.7	208	33.0	49.0	
2650	CP2790VT2P/RIB	VT2P	CROPLAN	227	32.5	70	48.5	--	--	--	--	--	--	
2675	CP2845VT2P/RIB	VT2P	CROPLAN	222	33.3	72	47.2	225	33.0	50.3	224	33.2	48.7	
2675	CP2851VT2P/RIB	VT2P	CROPLAN	211	33.1	71	47.4	--	--	--	--	--	--	
2700	CP2965VT2P/RIB	VT2P	CROPLAN	209	35.4	72	48.4	208	38.1	50.0	209	36.8	49.2	
Site Average				205	28.9	69	49.0	201	30.3	51.2				
CV				4.52	2.87	1.73	0.97	4.73	2.58	0.66				
Sign. Diff.				Yes	Yes	Yes	Yes	Yes	Yes	Yes				
LSD				15	1.3	2	0.8	15	1.3	0.5				
Planting Date:				May 20, 2020				May 9, 2019						
Harvest Date:				October 8, 2020				October 25, 2019						

1 Each company assigns a corn heat unit (CHU) rating to each of their hybrids. The CHU rating is a measure of relative maturity and is one criteria for choosing a hybrid suitable to your growing region.

2 Seeds Canada provides a database for corn hybrids available in Canada, available at <https://seeds-canada.ca/corn-hybrid-database>. Information provided includes technology, brand name and refuge requirements.

GRAIN CORN - ST. PIERRE - 2019/2020 SUMMARY

Comments:

The grain corn hybrid trials were tested and the data published by the Manitoba Corn Committee (MCC).

A target plant population of 32,000 plants per acre was used.

Yields are corrected to 15.5% moisture content. Moisture content is measured at time of harvest.

The MCC publishes the annual results with all the yearly data in their brochure, which is available by calling the Manitoba Crop Alliance (MCA) office.

The brochure is also available on the MCA website: www.mbcropalliance.ca

				ST. PIERRE - 2020				ST. PIERRE - 2019				2019/2020		
CHU	Hybrid	Technology/Genetic		Yield (bu/ac)	Moisture (%)	Days to Silking	Bushel WT (lbs/bus)	Yield (bu/ac)	Moisture (%)	Days to Silking	Bushel WT (lbs/bus)	Yield (bu/ac)	Moisture (%)	Bushel WT (lbs/bus)
		Trait(s)	Company											
2000	P 7005AM	YGCB/HX1/LL/RR2	Pioneer Brand Seeds	109	16.0	66	53.4	--	--	--	--	--	--	--
2025	DK C21-36R1B	VT2P	DEKALB	148	16.0	69	53.9	--	--	--	--	--	--	--
2025	A3993G2 R1B	VT2P	PRIDE Seeds	132	16.0	68	55.3	148	23.2	75	52.7	140	19.6	54.0
2025	TH4072 RR	RR2	Thunder Seed	125	17.1	69	52.9	140	23.8	76	51.3	139	20.5	52.1
2025	MZ 1200DBR	VT2P	Maizex Seeds	145	15.3	69	53.1	--	--	--	--	--	--	--
2050	PV 60172RR	RR2	Proven Seed	135	17.1	69	53.4	--	--	--	--	--	--	--
2050	P 7202AM	YGCB/HX1/LL/RR2	Pioneer Brand Seeds	118	16.8	67	53.5	126	23.5	75	50.9	122	20.2	52.2
2050	P 7211AM	YGCB/HX1/LL/RR2	Pioneer Brand Seeds	131	15.3	67	52.7	153	22.8	75	52.0	142	19.1	52.3
2050	TH7673 VT2P	VT2P	Thunder Seed	128	16.6	70	55.1	131	24.0	78	53.2	129	20.3	54.2
2100	DK C24-06R1B	VT2P	DEKALB	160	17.7	71	52.8	--	--	--	--	--	--	--
2100	P 7417R	RR2	Pioneer Brand Seeds	134	17.0	68	51.3	140	24.0	77	50.2	137	20.5	50.8
2100	P 7455R	RR2	Pioneer Brand Seeds	147	16.0	69	55.5	130	24.3	81	51.6	138	20.2	53.6
2100	NS 72521	VT2PR1B	Northstar Genetics	115	18.0	70	52.9	161	24.5	75	51.1	138	21.3	52.0
2100	TH6875 VT2P	VT2P	Thunder Seed	146	16.5	71	52.4	148	24.9	81	50.1	147	20.7	51.3
2100	E44H12R	VT2P	Maizex Seeds	127	16.3	70	54.8	146	23.7	79	53.2	136	20.0	54.0
2125	P 7417AM	YGCB/HX1/LL/RR2	Pioneer Brand Seeds	116	16.1	70	53.0	143	22.9	75	50.8	130	19.5	51.9
2125	PS 2210VT2P R1B	GENVT2P	DLF Pickseed	115	17.8	71	50.2	156	24.3	81	50.7	136	21.1	50.5
2150	DK C26-40R1B	VT2P	DEKALB	147	16.4	70	54.0	155	24.6	78	52.5	151	20.5	53.3
2150	P 7527AM	YGCB/HX1/LL/RR2	Pioneer Brand Seeds	131	17.0	71	53.1	147	24.8	83	49.5	139	20.9	51.3
2150	A4414RR	RR2	PRIDE Seeds	121	16.5	69	53.7	118	23.4	77	51.8	119	20.0	52.7
2150	HZ 1265	Agrisure GT	Horizon Seeds	112	17.5	66	55.1	--	--	--	--	--	--	--
2150	MZ 1340DBR	VT2P	Maizex Seeds	139	17.4	68	53.2	152	23.3	76	52.0	146	20.4	52.6
2175	PV 61276R1B	VT2P	Proven Seed	155	18.4	70	52.7	--	--	--	--	--	--	--
2175	TH7677 VT2P	VT2P	Thunder Seed	131	15.0	73	52.5	159	24.3	81	51.9	145	19.7	52.2
2200	EXP 77-20	VT2P	DEKALB	126	16.1	70	53.3	--	--	--	--	--	--	--
2200	PV 611775RR	RR2	Proven Seed	141	18.8	71	52.2	--	--	--	--	--	--	--
2200	P 7861R	RR2	Pioneer Brand Seeds	135	16.8	70	51.3	--	--	--	--	--	--	--
2200	A4323G2 R1B	VT2P	PRIDE Seeds	143	16.1	70	54.9	--	--	--	--	--	--	--
2200	HZ 1451	Agrisure 3120 EZR	Horizon Seeds	122	18.3	71	52.9	138	24.9	79	50.8	130	21.6	51.9
2200	TH6977 VT2P	VT2P	Thunder Seed	156	17.2	69	52.3	161	24.3	78	50.8	159	20.8	51.6
2250	P 7861AM	YGCB/HX1/LL/RR2	Pioneer Brand Seeds	144	17.5	70	53.4	162	24.1	79	50.3	153	20.8	51.8
2250	HZ 1685	Agrisure Viptera 3110	Horizon Seeds	116	19.5	71	52.7	--	--	--	--	--	--	--
2250	TH6079 VT2P	VT2P	Thunder Seed	124	18.7	71	49.9	157	23.5	79	51.2	141	21.1	50.5
2250	CP1725RR	RR	CROPLAN	128	15.9	71	52.9	--	--	--	--	--	--	--
2250	MZ 1544DBR	VT2P	Maizex Seeds	131	16.0	72	52.1	--	--	--	--	--	--	--
2275	DK C29-89R1B	VT2P	DEKALB	141	16.3	71	50.3	172	23.4	81	50.3	156	19.9	50.3
2275	P 7940AM	YGCB/HX1/LL/RR2	Pioneer Brand Seeds	124	17.1	71	52.2	152	23.7	81	51.0	138	20.4	51.6
2275	P 7958AM	YGCB/HX1/LL/RR2	Pioneer Brand Seeds	130	17.9	73	51.8	--	--	--	--	--	--	--
2275	PS 2333RR	RR2	DLF Pickseed	124	20.9	71	52.4	178	24.6	79	52.3	151	22.8	52.3
2300	PV 61180R1B	VT2P	Proven Seed	129	17.2	73	49.4	186	24.6	81	49.6	157	20.9	49.5
2300	A4646G2 R1B	VT2P	PRIDE Seeds	116	16.3	72	51.4	147	24.9	84	49.2	131	20.6	50.3
2300	CP 2123VT2P/R1B	VT2P	CROPLAN	138	15.6	72	51.1	139	24.7	82	49.5	138	20.2	50.3
2300	MZ 1688DBR	VT2P	Maizex Seeds	136	17.1	73	50.9	173	24.3	81	49.4	154	20.7	50.2
2350	HZ 1912	Agrisure 3120 EZR	Horizon Seeds	121	19.8	71	51.2	172	24.7	81	49.9	147	22.3	50.6
2350	191	VT2PR1B	Northstar Genetics	140	18.4	73	47.1	--	--	--	--	--	--	--
2375	CP 2180VT2P/R1B	VT2P	CROPLAN	131	17.6	73	49.1	--	--	--	--	--	--	--
2400	DK C33-78R1B	VT2P	DEKALB	131	17.9	72	50.8	161	24.7	83	51.0	146	21.3	50.9
2400	P 8234AM	YGCB/HX1/LL/RR2	Pioneer Brand Seeds	127	18.6	72	49.3	147	24.8	81	48.1	137	21.7	48.7
2400	A4939G2 R1B	VT2P	PRIDE Seeds	122	16.4	72	51.7	161	23.9	81	49.8	142	20.2	50.7
2400	Z55	VT2PR1B	Northstar Genetics	154	19.1	72	50.5	--	--	--	--	--	--	--
2425	DK C31-85R1B	VT2P	DEKALB	150	17.7	71	50.0	--	--	--	--	--	--	--
2425	P 8352AM	YGCB/HX1/LL/RR2	Pioneer Brand Seeds	131	17.4	72	49.9	146	24.1	79	50.6	139	20.8	50.2
2425	TH6182 VT2P	VT2P	Thunder Seed	146	18.3	70	50.1	--	--	--	--	--	--	--
2425	TH6982 VT2P	VT2P	Thunder Seed	122	18.8	72	50.2	167	26.1	79	50.3	145	22.5	50.2
2450	P 8407AM	YGCB/HX1/LL/RR2	Pioneer Brand Seeds	140	20.1	73	47.9	170	26.1	82	47.4	155	23.1	47.7
2450	CP 2288VT2P/R1B	VT2P	CROPLAN	127	20.7	73	47.8	156	24.5	84	50.0	142	22.6	48.9
2500	DK C33-37R1B	VT2P	DEKALB	147	19.3	71	50.2	--	--	--	--	--	--	--
2500	CP 2315VT2P/R1B	VT2P	CROPLAN	146	21.4	73	48.0	--	--	--	--	--	--	--
2550	CP 2417VT2P/R1B	VT2P	CROPLAN	141	17.3	73	51.4	--	--	--	--	--	--	--
2625	CP 2587VT2P/R1B	VT2P	CROPLAN	131	21.0	75	48.3	168	24.1	83	49.7	150	22.6	49.0
2650	CP 2790VT2P/R1B	VT2P	CROPLAN	150	20.2	72	47.3	--	--	--	--	--	--	--
2675	CP 2845VT2P/R1B	VT2P	CROPLAN	133	22.0	73	46.2	--	--	--	--	--	--	--
2675	CP 2851VT2P/R1B	VT2P	CROPLAN	132	23.4	76	45.8	--	--	--	--	--	--	--
2700	CP 2965VT2P/R1B	VT2P	CROPLAN	128	24.2	77	46.1	--	--	--	--	--	--	--
Mean				133	17.8	71	51.5	155	24.3	80	50.6			
CV				8.27	5.78	1.58	2.45	7.28	3.98	1.55	2.42			
Sign. Diff.				Yes	Yes	Yes	Yes	Yes	Yes	Yes	Yes			
LSD				18	1.7	2	2.0	18	1.6	2	2.0			
Planting Date:				May 18, 2020				May 14, 2019						
Harvest Date:				October 15, 2020				November 6, 2019						

1 Each company assigns a corn heat unit (CHU) rating to each of their hybrids. The CHU rating is a measure of relative maturity and is one criteria for choosing a hybrid suitable to your growing region.

2 Seeds Canada provides a database for corn hybrids available in Canada, available at <https://seeds-canada.ca/corn-hybrid-database>. Information provided includes technology, brand name and refuge requirements.

GRAIN CORN - MELITA - 2019/2020 SUMMARY

Comments:

The grain corn hybrid trials were tested and the data published by the Manitoba Corn Committee (MCC).

A target plant population of 32,000 plants per acre was used.

Yields are corrected to 15.5% moisture content. Moisture content is measured at time of harvest.

The MCC publishes the annual results with all the yearly data in their brochure, which is available by calling the Manitoba Crop Alliance (MCA) office.

The brochure is also available on the MCA website: www.mbcrpalliance.ca

CHU	Hybrid	Technology/Genetic Trait(s)	Company	MELITA - 2020				MELITA - 2019				2019/2020			
				Yield (bu/ac)	Moisture (%)	Days to Silking	Bushel Wt (lbs/bu)	Yield (bu/ac)	Moisture (%)	Days to Silking	Bushel Wt (lbs/bu)	Yield (bu/ac)	Moisture (%)	Bushel Wt (lbs/bu)	
2000	PS 2142RR	RR2	PICKSEED	112	16.6	68	56.2	--	--	--	--	--	--	--	--
2000	P7005AM	YGCB/HX1/LL/RR2	Pioneer Brand Seeds	122	11.9	67	57.6	--	--	--	--	--	--	--	--
2025	DKC21-36RIB	VT2P	DEKALB	146	15.4	68	55.8	--	--	--	--	--	--	--	--
2025	A3993G2 RIB	VT2P	PRIDE Seeds	120	15.1	67	56.6	110	36.3	73	49.0	115	25.7	52.8	
2025	TH4072 RR	RR2	Thunder Seed	129	11.9	68	53.9	114	38.2	78	48.5	122	25.1	51.2	
2050	NS 271 (NSC EXP73)	VT2PRIB	Northstar Genetics	129	12.8	67	55.6	--	--	--	--	--	--	--	--
2050	P7202AM	YGCB/HX1/LL/RR2	Pioneer Brand Seeds	136	12.5	67	54.1	120	33.4	72	49.6	128	23.0	51.9	
2050	P7211AM	YGCB/HX1/LL/RR2	Pioneer Brand Seeds	128	11.1	68	53.2	134	32.0	75	49.3	131	21.6	51.2	
2050	PV 60172RR	RR2	Proven Seed	137	15.0	69	55.1	100	40.6	76	48.1	118	27.8	51.6	
2050	TH7673 VT2P	VT2P	Thunder Seed	106	17.6	67	57.0	107	40.2	75	49.2	107	28.9	53.1	
2100	CP1440VT2P/RIB	VT2P	CROPLAN	122	12.2	68	53.4	--	--	--	--	--	--	--	--
2100	DKC24-06RIB	VT2P	DEKALB	136	17.5	70	54.9	--	--	--	--	--	--	--	--
2100	E44H12R	VT2P	Maizex Seeds	110	15.7	69	55.6	110	42.8	75	49.2	110	29.3	52.4	
2100	NS 72-521	VT2PRIB	Northstar Genetics	116	15.1	68	55.2	99	42.1	74	48.4	107	28.6	51.8	
2100	P7417R	RR2	Pioneer Brand Seeds	134	12.8	68	52.6	115	33.4	76	47.2	124	23.1	49.9	
2100	P7455R	RR2	Pioneer Brand Seeds	140	15.9	69	52.7	111	34.9	77	49.9	126	25.4	51.3	
2100	TH6875 VT2P	VT2P	Thunder Seed	121	16.8	68	52.5	103	40.5	78	46.4	112	28.7	49.4	
2125	PS 2210VT2P RIB	GENVT2P	PICKSEED	120	13.6	72	50.6	98	39.8	80	47.2	109	26.7	48.9	
2125	P7417AM	YGCB/HX1/LL/RR2	Pioneer Brand Seeds	134	12.9	70	53.2	118	34.7	77	46.4	126	23.8	49.8	
2150	DKC26-40RIB	VT2P	DEKALB	132	17.9	69	55.7	112	40.3	76	48.1	122	29.1	51.9	
2150	HZ1265	Agrisure GT	Horizon Seeds	123	15.9	68	56.3	--	--	--	--	--	--	--	--
2150	MZ1340DBR	VT2P	Maizex Seeds	139	15.8	68	55.3	100	42.5	76	46.7	120	29.2	51.0	
2150	P7527AM	YGCB/HX1/LL/RR2	Pioneer Brand Seeds	143	19.3	70	49.1	132	40.0	80	47.4	138	29.7	48.3	
2150	A4414RR	RR2	PRIDE Seeds	107	18.0	68	55.7	--	--	--	--	--	--	--	--
2175	PV 61276RIB	VT2P	Proven Seed	138	16.7	70	54.6	--	--	--	--	--	--	--	--
2200	HZ1451	Agrisure 3120 EZR	Horizon Seeds	112	16.8	69	52.7	--	--	--	--	--	--	--	--
2200	A432G2 RIB	VT2P	PRIDE Seeds	134	13.8	67	56.3	--	--	--	--	--	--	--	--
2200	PV 61177SRR	RR2	Proven Seed	131	26.5	70	48.9	--	--	--	--	--	--	--	--
2200	TH6977 VT2P	VT2P	Thunder Seed	132	17.1	69	52.8	110	44.0	78	46.3	121	30.6	49.5	
2250	CP1725RR	RR	CROPLAN	124	12.3	70	52.2	--	--	--	--	--	--	--	--
2250	TH6079 VT2P	VT2P	Thunder Seed	146	20.8	69	51.8	115	41.1	80	46.5	131	31.0	49.2	
2300	CP2123VT2P/RIB	VT2P	CROPLAN	137	11.5	70	52.5	111	37.7	81	47.2	124	24.6	49.8	
			Mean	127	15.4	69	54.0	110	39.8	77	47.7				
			CV	6.98	6.82	1.57	1.31	8.70	4.27	2.48	1.12				
			Sign. Diff.	Yes	Yes	Yes	Yes	Yes	Yes	Yes	Yes				
			LSD	15	1.7	2	1.2	16	2.8	3	0.9				
			Planting Date:	May 20, 2020				May 16, 2019							
			Harvest Date:	October 8, 2020				October 31, 2019							

1. Each company assigns a corn heat unit (CHU) rating to each of their hybrids. The CHU rating is a measure of relative maturity and is one criteria for choosing a hybrid suitable to your growing region.

2. Seeds Canada provides a database for corn hybrids available in Canada, available at <https://seeds-canada.ca/corn-hybrid-database>. Information provided includes technology, brand name and refuge requirements.



DISTRIBUTOR CONTACTS FOR TESTED HYBRIDS

See Grain/Silage Corn table for specific hybrids, then check the Distributor table below for the contact phone number.

Distributor	Seed Brand/Company	Phone Number
Bayer CropScience Canada Ltd.	DEKALB	1-888-283-6847
Brett Young	Brett Young	1-800-665-5015
Ceres Global Seeds	Horizon Seeds	1-888-974-7246
Corteva AgriScience	Pioneer Brand Seeds	1-800-667-3852
DLF Pickseed Canada Inc.	PICKSEED	1-204-633-0088
Fraser Seeds Ltd.	Greenfield Genetics	1-604-857-3355
Maizex Seeds Inc.	Maizex Seeds	1-877-682-1720
NorthStar Genetics Ltd.	NorthStar Genetics	1-204-262-2425
Nutrien Ag Solutions	Proven Seed	1-855-569-9444
PRIDE Seeds	PRIDE Seeds	1-800-265-5280
Syngenta Canada	NK	1-877-964-3682
Thunder Seed Canada Inc.	Thunder Seed	1-888-684-8633
WinField United Canada	CROPLAN	1-888-975-4769





MANITOBA CORN COMMITTEE

The Manitoba Corn Committee (MCC) is a group of individuals from the Manitoba Crop Alliance (MCA), Canadian Seed Trade Association (CSTA), and Manitoba Agriculture and Resource Development (MARD) who are interested with the production of grain and silage corn in Manitoba. The committee has the authority within the Province of Manitoba to conduct trials of corn hybrids with the goal to provide information to Manitoba producers about the performance of corn hybrids across the corn growing regions of the province. The MCC publishes the data annually in the “Manitoba Corn Hybrid Performance Trials” brochure.

Members of the Manitoba Corn Committee:

Daryl Rex – Chair

Research Trial Specialist
MB Crop Alliance
Ph: 204.745.6661

Allan Froese
Syngenta Canada
Seeds Canada Representative
Ph: 204.750.8124

Jonathan Lea
Bayer Crop Science Canada Ltd.
Seeds Canada Representative
Ph: 204.891.4497

Wilt Billing
Nutrien Ag Solutions
Seeds Canada Representative
Ph: 204.332.1826

Morgan Cott
Agronomy Extension Specialist – Special Crops
MB Crop Alliance
Ph: 204.745.6661

Emile Morin
MB Crop Alliance Representative
Ph: 204.326.0770

Hubert Preun
MB Crop Alliance Representative
Ph: 204.785.3801

Anne Kirk
Cereal Specialist
MB Agriculture and Resource Development
Ph: 204.750.1351

Earl Bargaen
Farm Production Extension Specialist
MB Agriculture and Resource Development
Ph: 204.392.2247

For any questions or comments, please contact:

Daryl Rex
Email: daryl@mbcropalliance.ca







MANITOBA
CROP
ALLIANCE

CONNECT WITH US
mbcropalliance.ca
hello@mbcropalliance.ca

P: 204.745.6661

  
[@mb_cropalliance](https://www.facebook.com/mbcropalliance)